

06-11-2002

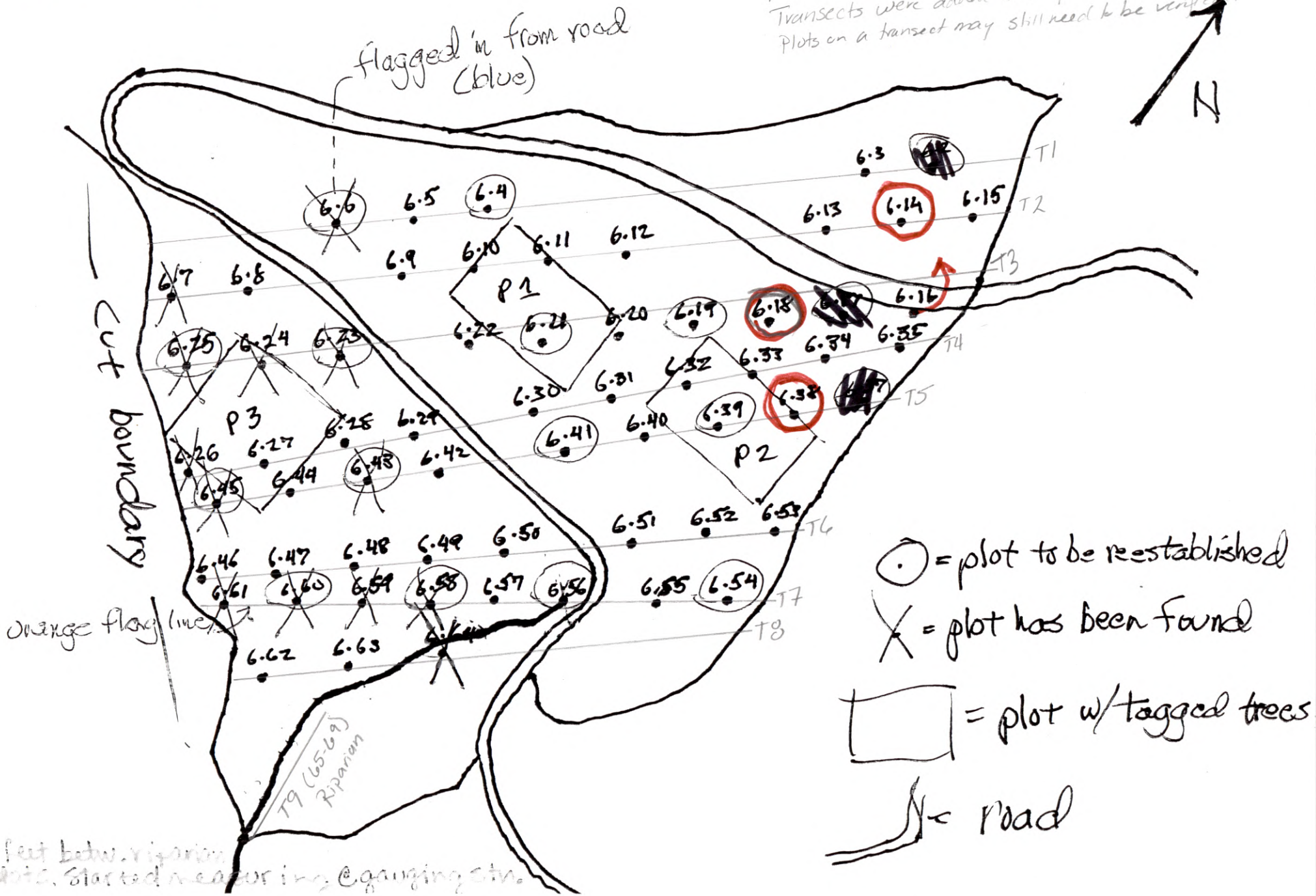
updated 20021014

Δ = plot changes - to be confirmed

W506

Transect = red flagging
Plot center/boundary = blue flagging

9-11-2013 (smr)
Transects were added to map
Plots on a transect may still need to be verified.



06-11-2002

WS07

Updated 20021014

Changes — to be confirmed

9-11-2013 (smk)

Transects were added to map.
Plots on a transect may still
need to be verified.



115 ft. betw.
riparian plots.
Started measuring
@ gauging station.

- = plot to be reestablished
- X = plot has been found
- = plot w/ tagged trees
- == = road