

[Store](#) | [Contact Us](#) | [Careers](#) [Home](#) | [Products](#) | [Services](#) | [Industries](#) | [User Showcase](#) | [Training & Events](#) | [Support](#) | [About ESRI](#)

Map Book Gallery Volume 20

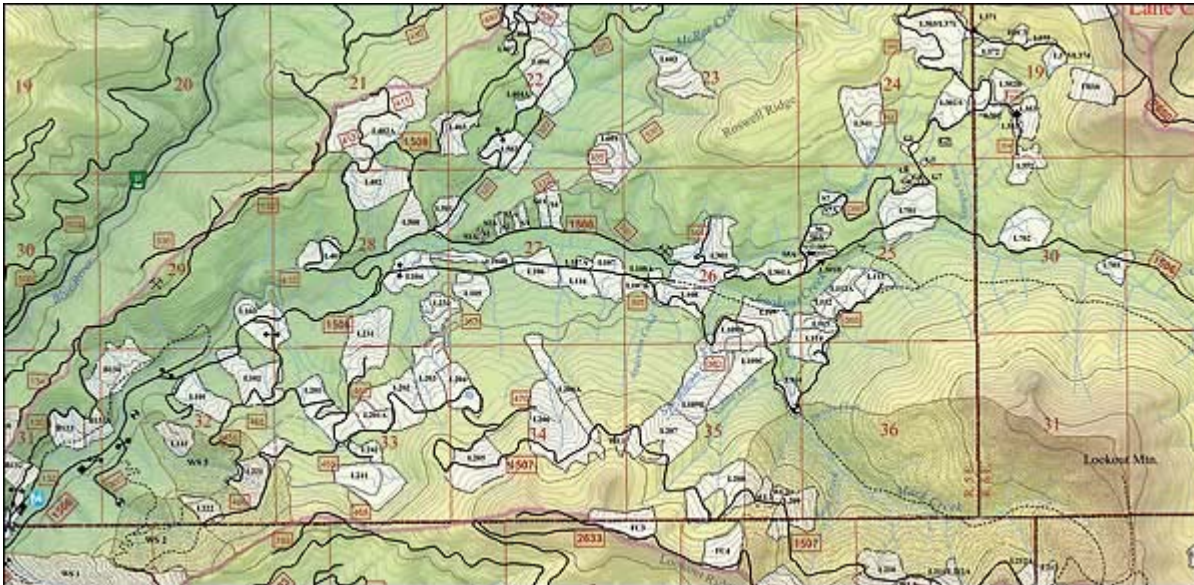
[Table of Contents](#)[Index](#)[Map Book Gallery](#)

Search Map Books

 [< Previous](#) | [Next >](#)

H.J. Andrews Experimental Forest Map

U.S. Department of Agriculture, Forest Service

[Forestry](#)

Corvallis, Oregon, USA

*By Theresa Valentine***Contact**

Theresa Valentine

[E-mail](#)**Software**ArcInfo 8.3 and 9 and
Windows 2000**Printer**

HP Designjet 5000

Data Source(s)Bureau of Land
Management, U.S. Forest
Service, U.S. Geological
Survey

The previous version of this working map was developed in 1986, and as the printed supply was dwindling, it was updated and reworked for publication. The map author used ArcGIS 8.3 and 9, producing the map in ArcMap. Several issues were encountered including a shifting map extent and placement of contour labels. The masking technique available in version 9.0 was used to label the contours, masking out the contour lines but keeping the color of the shaded relief.

The data sources were from U.S. Forest Service Research and the Willamette National Forest. The latest Public Land Survey data was obtained from the Bureau of Land Management (BLM). It is interesting to note that this data did not match the previous version of the map or Willamette National Forest fire maps. The author chose the BLM data after checking with surveyors from both the BLM and the Forest Service. The shift is significant because many researchers identify the locations of their study sites by township/range and section.

The map was commercially printed and will be available as hard copy and on the Web. As errors are discovered, the .mxd file, as well as the Web site, will be updated. The next printing will be easier as the .mxd file will be available, and a file suitable for printing will be exported.

Many data layers that come from a large computer network are displayed on this map. Drawing performance showed a significant improvement with

version 9.0.

Forestry Maps [1](#) [2](#) [3](#) [4](#)

[< Previous](#) | [Next >](#)

ESRI Web Sites: [■ESRI Business Information Solutions](#) [■Geography Network](#) [■Distributors Worldwide](#)

[Home](#) | [Products](#) | [Services](#) | [Industries](#) | [User Showcase](#) | [Training & Events](#) | [Support](#) | [About ESRI](#)
[Contact Us](#) | [Store](#) | [Site Map](#) | [PRIVACY](#) | [Copyright © ESRI](#) | [Podcast Feeds](#) | [RSS News Feed](#) | [Careers](#)

Last Updated: Thursday, September 22, 2005.