

H.J. Andrews Experimental Forest

McKenzie River Ranger District Willamette National Forest Oregon

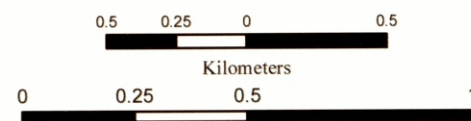
- | | | |
|---------------------|-----------------------|--------------------|
| ⚓ Gate | □ Section Line | ○ HJA Boundary |
| ◆ Met Station | — Road | WS Small Watershed |
| ⊕ Stream Gage | — Abandoned Road | --- County Line |
| ⚡ Quarry | --- Trail | 🌊 Lake |
| 🏠 Emergency Shelter | 📏 Timber Harvest Unit | 🏠 Lookout Station |
| 🌊 Stream | 🏠 Headquarters | |



United States
Department of
Agriculture



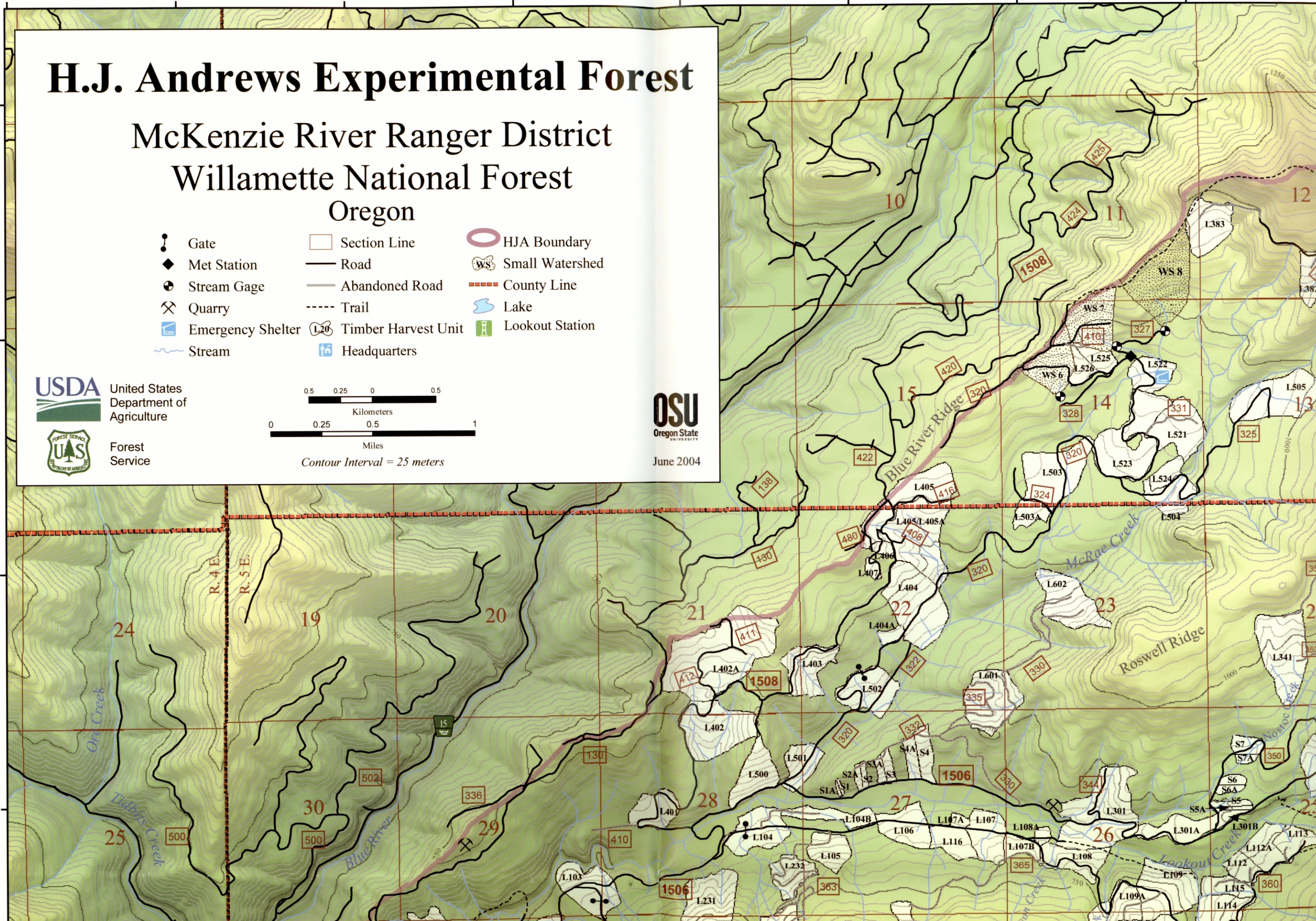
Forest
Service

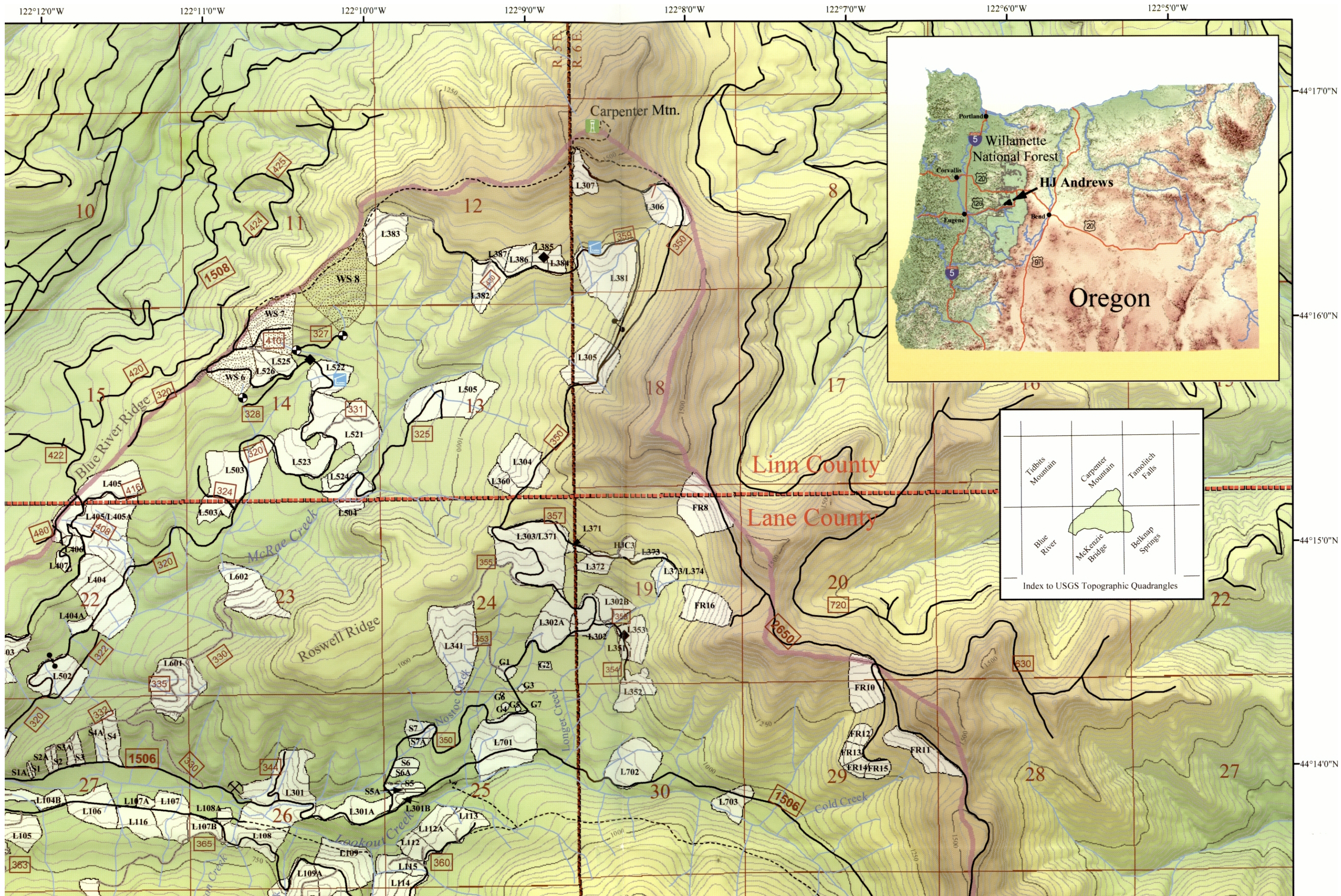


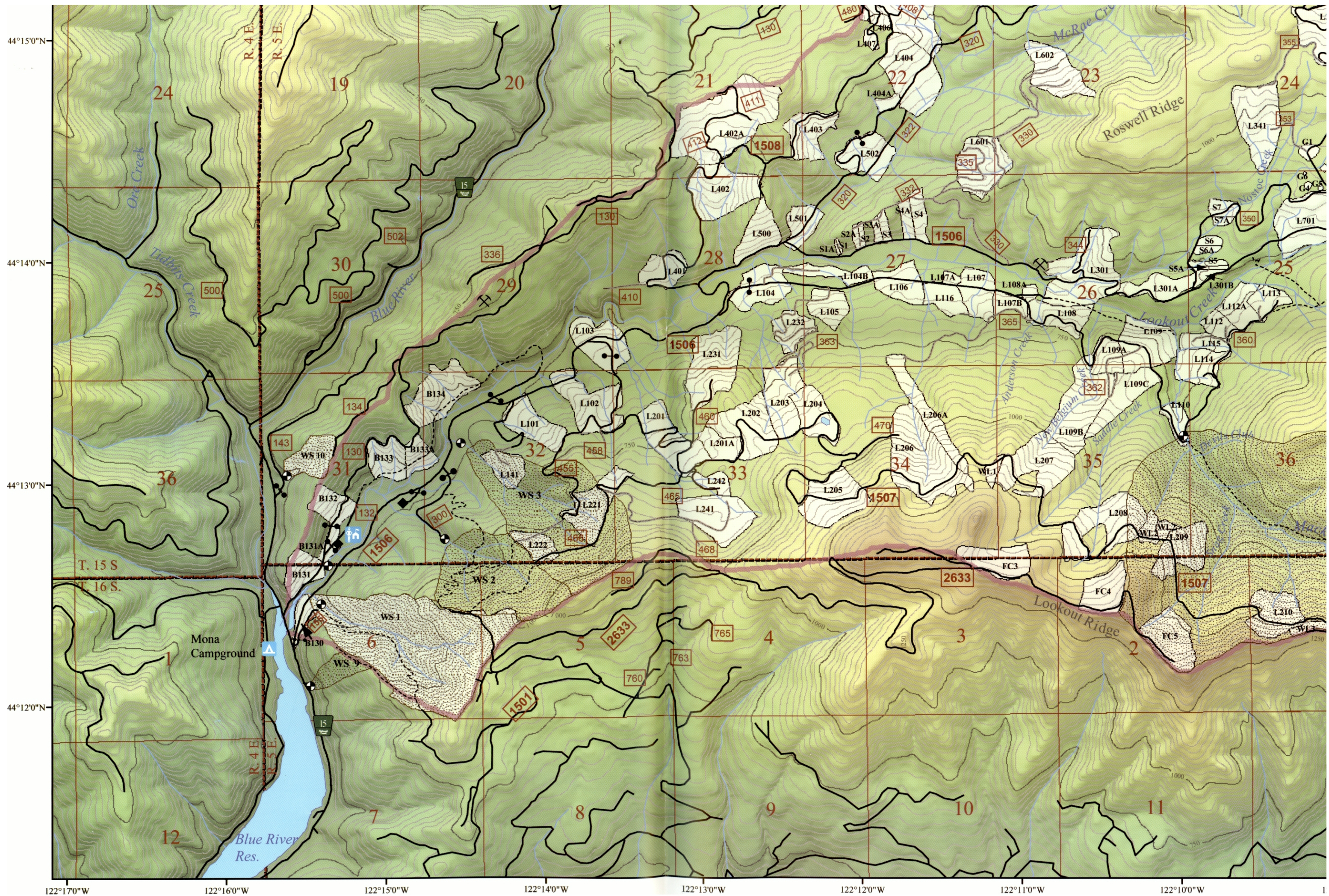
Contour Interval = 25 meters

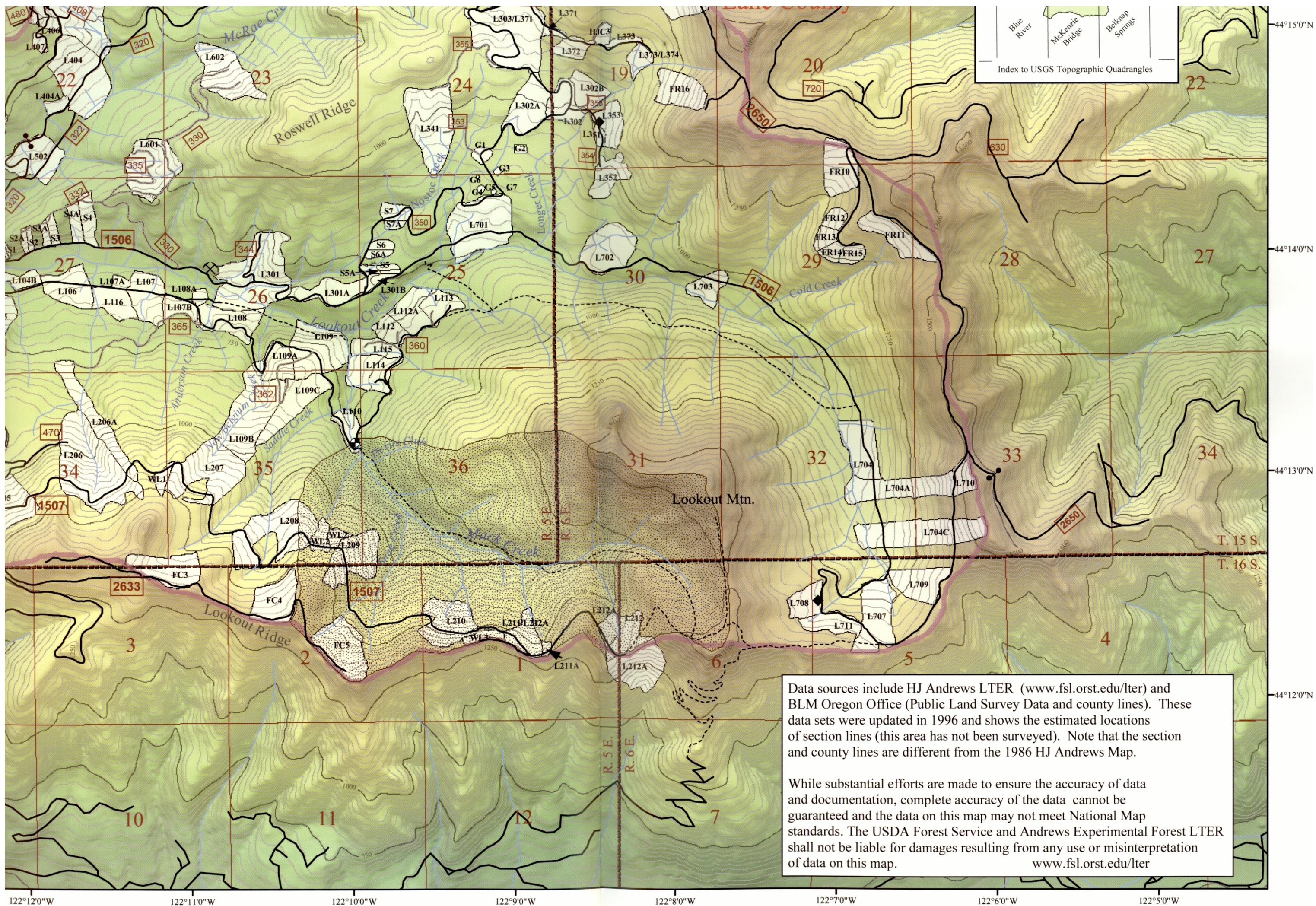


June 2004









Data sources include HJ Andrews LTER (www.fsl.orst.edu/lter) and BLM Oregon Office (Public Land Survey Data and county lines). These data sets were updated in 1996 and shows the estimated locations of section lines (this area has not been surveyed). Note that the section and county lines are different from the 1986 HJ Andrews Map.

While substantial efforts are made to ensure the accuracy of data and documentation, complete accuracy of the data cannot be guaranteed and the data on this map may not meet National Map standards. The USDA Forest Service and Andrews Experimental Forest LTER shall not be liable for damages resulting from any use or misinterpretation of data on this map.

www.fsl.orst.edu/lter