

Perspectives on next-generation technology for environmental sensor networks

Barbara J Benson^{1*}, Barbara J Bond², Michael P Hamilton³, Russell K Monson⁴, and Richard Han⁵

Sensor networks promise to transform and expand environmental science. However, many technological difficulties must be overcome to achieve this potential. Partnerships of ecologists with computer scientists and engineers are critical in meeting these challenges. Technological issues include promoting innovation in new sensor design, incorporating power optimization schemes, integrating appropriate communication protocols, streamlining data management and access, using innovative graphic and statistical analyses, and enabling both scientists and the public to access the results. Multidisciplinary partnerships are making major contributions to technological advances, and we showcase examples of this exciting new technology, as well as new approaches for training researchers to make effective use of emerging tools.

Front Ecol Environ 2010; 8(4): 193–200, doi:10.1890/080130 (published online 5 Jun 2009)

A new era in the environmental sciences is dawning, in which technological developments and the emergence of scientists with increased levels of training in, and familiarity with, cyberspace promise to revolutionize the way we collect and interpret data. Sensor-based observing systems will form a new and critical resource for environmental sciences, by characterizing such diverse subjects as plankton colonies, endangered species, and soil and air contaminants. Across a wide range of applications, sensor networks promise to reveal new insights by expanding and integrating the scales at which scientists can perceive the natural world, in both space and time (Arzberger *et al.* 2005; Porter *et al.* 2005;

Hamilton *et al.* 2007). From studies of nesting success to ocean currents to ecosystem metabolism, previously unobserved phenomena are being detected and ecological theory extended, based on information derived from sensor systems (Porter *et al.* 2009). The many emerging environmental observatories (eg National Ecological Observatory Network [NEON]; WATER and Environmental Research Systems [WATERS]; Ocean Observatories Initiative) clearly testify to the importance of this new era of sensor observations within the environmental sciences.

Innovation in sensors and sensing networks is advancing as a result of collaborations among engineers, computer scientists, and environmental scientists. The application of these technologies to answer specific scientific questions can uncover unexpected limitations that can motivate further novel technological solutions. Here, we highlight examples from such partnerships to illustrate emerging advances in sensor design and operation, sensor platforms, networking and communications, information management systems, and training programs.

In a nutshell:

- Realizing the promise of sensor networks to transform environmental science requires strong partnerships among ecologists, computer scientists, and engineers
- Environmental sensor and sensor platform development is advancing rapidly, providing promising new measurement capabilities
- Intelligent networks, passive power technologies, and hierarchical wireless networking architecture are addressing previous power and communication constraints
- Advances in real-time data acquisition systems and tools to integrate data and models in near-real-time will allow processing of rapid, high-volume data streams
- Innovative training programs are needed to prepare next-generation researchers to use sensor networks and to collaborate across disciplines

■ New sensors: changing the way ecologists conduct research

Measurement tools often place severe restrictions on the power and reliability of environmental research. To measure chemical, isotopic, or genetic properties of organisms or the environment, ecologists typically need to physically remove samples from the environment and transfer them to the laboratory – a procedure that often risks altering the very properties they want to measure. Field-based measurements are frequently limited to specific pulses in time or locations where field crews can conduct the measurements. Thanks to partnerships between engineers and ecologists, new sensors are enabling ecologists to conduct more research in situ and to greatly expand

¹Center for Limnology, University of Wisconsin–Madison, Madison, WI * (bjbenson@wisc.edu); ²Department of Forest Ecosystems and Society, Oregon State University, Corvallis, OR; ³Blue Oak Ranch Reserve, University of California, Berkeley, Berkeley, CA; ⁴Department of Ecology and Evolutionary Biology, University of Colorado, Boulder, CO; ⁵Department of Computer Science, University of Colorado, Boulder, CO

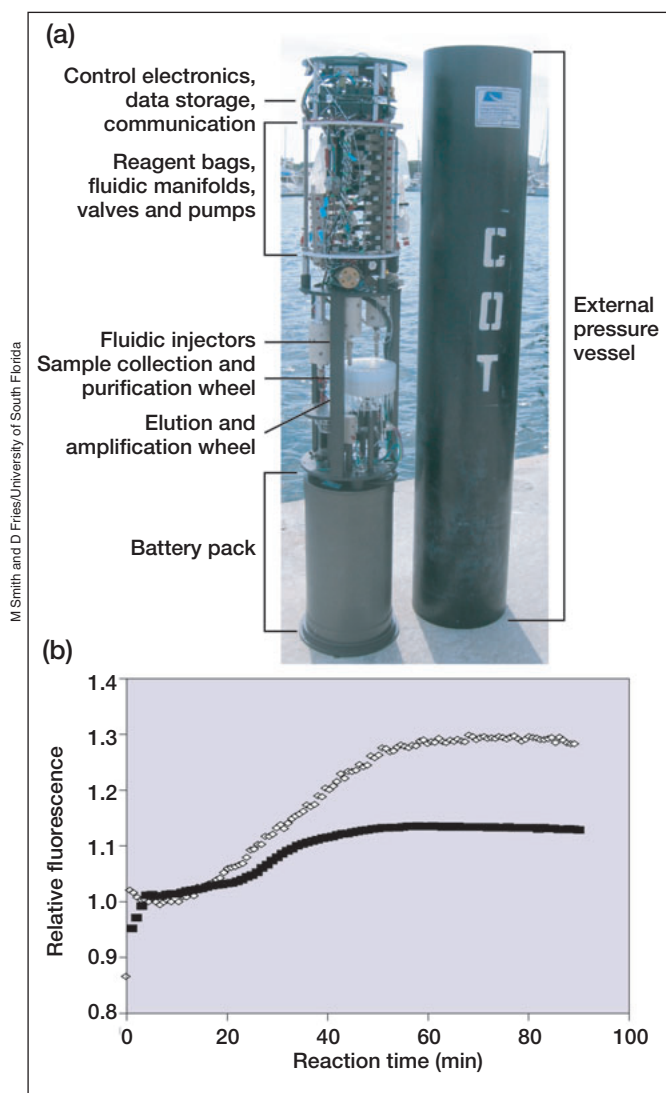


Figure 1. (a) Image of the autonomous microbial genosensor (AMG), highlighting key components. For field deployment, the AMG is housed in an anodized aluminum pressure vessel. (b) Example positive response of the prototype AMG system during a “red tide” bloom in Sarasota, FL, December 2006. It was configured to detect the *rbL* gene in the dinoflagellate *Karenia brevis* by NASBA amplification (Casper *et al.* 2004). The amplification plot from the AMG (black squares) showed good correlation with a standard laboratory extraction and amplification (open diamonds). The *rbL* transcript concentration in the water sample can be estimated by way of these curves, based on the time required for the reaction to cross a predetermined fluorescence threshold. However, the current system and simplified NASBA chemistry used are still under development, and accurate quantification is not yet possible.

the temporal and spatial domain of their research. The following are only a few examples.

Moving wet chemistry from the lab bench to the field

Complex “lab bench” chemical analyses are being automated and packaged into field-durable sensors, allowing

real-time detection of chemical and genetic properties in the field. For example, the autonomous microbial genosensor (AMG; Figure 1) combines systems for sample collection, filtration, cell lysis, RNA extraction/purification/concentration, isothermal gene amplification by nucleic acid sequence-based amplification (NASBA; Compton 1991; Smith *et al.* 2007), and data transmission. The prototype AMG under development is configured to detect the “red tide”-causing dinoflagellate *Karenia brevis*, but its modular design can be adapted to detect any organism for which gene sequence information is known. A conceptually similar environmental sample processor is under development at the Monterey Bay Aquarium Research Institute and has been successfully used to detect marine microbial eukaryotes (Greenfield *et al.* 2006; Jones *et al.* 2008).

Advances in species identification

A research team composed of scientists from Oregon State University and the University of Washington is developing technology to automate invertebrate biodiversity surveys, by integrating recent advances in computer vision and robotics (Larios *et al.* 2007). A prototype laboratory system is capable of identifying stonefly larvae in freshwater streams. The research team is now expanding the system to work with soil arthropods and freshwater zooplankton. Also in the developmental phase is a system capable of using wingbeat frequency to differentiate between insect species (eg Belton and Costello 1979; Caprio *et al.* 2001). Flying insects power their wings using highly coordinated rhythmic contractions, with species-specific wingbeat frequencies (Moore *et al.* 1986; Moore and Miller 2002). Scientists at the Oregon Health Sciences University, the University of Guam, and APTIV Inc of Portland, Oregon, are developing and field testing a system that enables remote, automated, real-time identification of flying insects, called FAST-ID (Flight Activity Signature Technology for IDentification). The FAST-ID system compares “flight signatures” (wingbeat plus harmonics) for insects flying between a light source and photosensor to a library of signatures, using a statistical classifier or an artificial neural network. The FAST-ID system is being tested at the HJ Andrews Experimental Forest in Oregon.

Expanding the “sensed domain”: digital eyes, moving platforms, and fiber-optic cables

The use of cameras for surface-based remote sensing has led to new ways of detecting and quantifying biotic activity. Engineers and biologists at the University of California, Los Angeles’ (UCLA) Center for Embedded Networked Sensing (CENS) are deploying dense networks of imagers within range of prototype wireless platforms (Allen *et al.* 2008). One system, called “Cyclops”, is a low-power wireless device designed to detect animals in

pitfall traps and to study avian reproductive behavior at nest sites.

High-resolution digital cameras with pan-tilt controls, mounted on towers and mobile robots, are being used to monitor plant phenology (Graham *et al.* 2009). The timing of leaf flushes, photosynthesis, and flowering events can be readily quantified through a combination of visible light spectroscopy and pattern recognition (Richardson *et al.* 2007). The next major challenge will be to develop efficient algorithms that will run on the micro-processor of the digital camera to detect trends and events at the moment that they occur, and even adapt the processing to improve the imager's ability to classify a pattern (Allen *et al.* 2008).

Placing sensors on a mobile platform extends the spatial domain of sensor measurements. CENS collaborators have developed fixed, as well as rapidly deployable, cable-based sensor platforms, and unmanned aerial vehicles, which are suitable for a wide range of applications in both terrestrial and aquatic environments (Kaiser and Sukatme 2007). As another example, at the University of Colorado and the National Center for Atmospheric Research in Boulder, Colorado, researchers have developed and deployed a 150-m mobile tram system, embedded within an array of flux towers, with a sensor trolley traveling along the track at a speed of 5 m s^{-1} and measuring a suite of environmental factors, as well as location and altitude (Figure 2). Data signals are transmitted wirelessly to a base station. Using the tram system, researchers have collected relatively high-frequency data, permitting the characterization of horizontal CO_2 concentration gradients and fluxes (Oncley *et al.* 2009). Another approach to extending the spatial domain of measurements uses fiber-optic cables to measure temperature (Selker 2008). With careful calibration, precision approaching 0.01°C can be achieved at a spatial resolution of 1 m, along distances of up to 4 km; new-generation systems have even greater capacity, although there is a trade-off between frequency and precision of measurements. Among many other applications, Distributed Temperature Sensor systems are being used to investigate the dynamics of water flow, impacts on fish habitat in watersheds, and the processes and ecological consequences of air turbulence in airsheds (Selker *et al.* 2006a, b; Lowry *et al.* 2007; Westhoff *et al.* 2007).

■ Transcending power limitations

Although ecology is increasingly being studied in urban and suburban settings, it remains largely a science of nat-

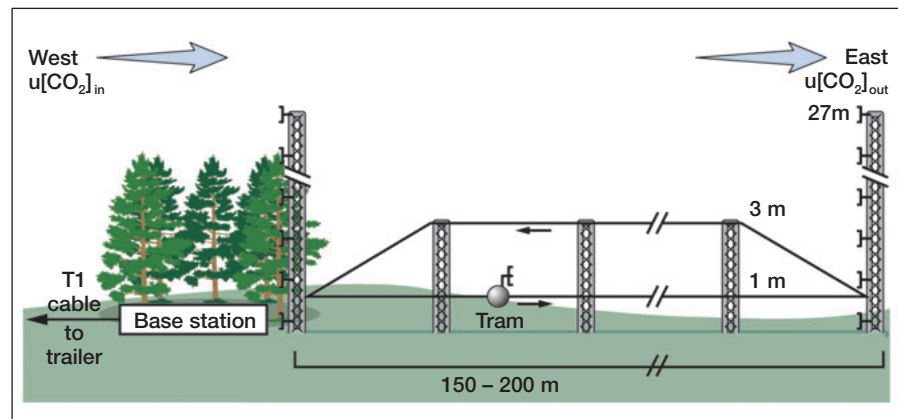


Figure 2. Nested deployment of a mobile tram system within the footprint bounded by CO_2 profiling towers at the Niwot Ridge AmeriFlux site in Colorado. The tram sensors move at 5 m s^{-1} . The tram is deployed along a linear, bi-level track in a west-to-east alignment, allowing it to capture the fine-grained structure of CO_2 and wind fields in the direction of the prevailing wind flows. By combining the two nested networks, the advective CO_2 flux ($u[\text{CO}_2]$) at centimeter-to-meter scales can be calculated. All instruments in the two networks transmit data to a base station for time synchronization, post-processing, and collation.

ural phenomena in undeveloped ecosystems. The placement of instruments and sensors in remote locations is often restricted by the limited capacity for power storage and/or access; batteries have a limited life before requiring a recharge, and there is often no access to power lines.

Harvesting remote power

The introduction of passively, or remotely, powered devices has progressed to the prototype stage. These devices do not require an internal power source, but rather extract their power from propagated radio waves, sunlight, or mechanical vibration. Researchers at Oregon State University are developing an integrated system that allows sensors with unique antennae to scavenge energy from radio frequency (RF) signals transmitted from a central hub (Figure 3). The hub itself is powered by traditional energy sources (eg line power or solar panels). Ultimately, up to 200 sensors will be placed in an array around the hub, using RF waves both for power and communication. The ability for sensors to directly scavenge RF power was hampered for many years by the high power requirements of the scavenging apparatus itself. Recent changes in circuit design, however, have greatly reduced internal power requirements, leading to the development of circuits capable of a net energy gain during the extraction process (Le *et al.* 2006).

Power conservation through intelligent sensor aggregation

In addition to new strategies for generating electrical power, limitations can be overcome through more efficient network design, thereby reducing rates of power consumption. Efficient network designs can be achieved,

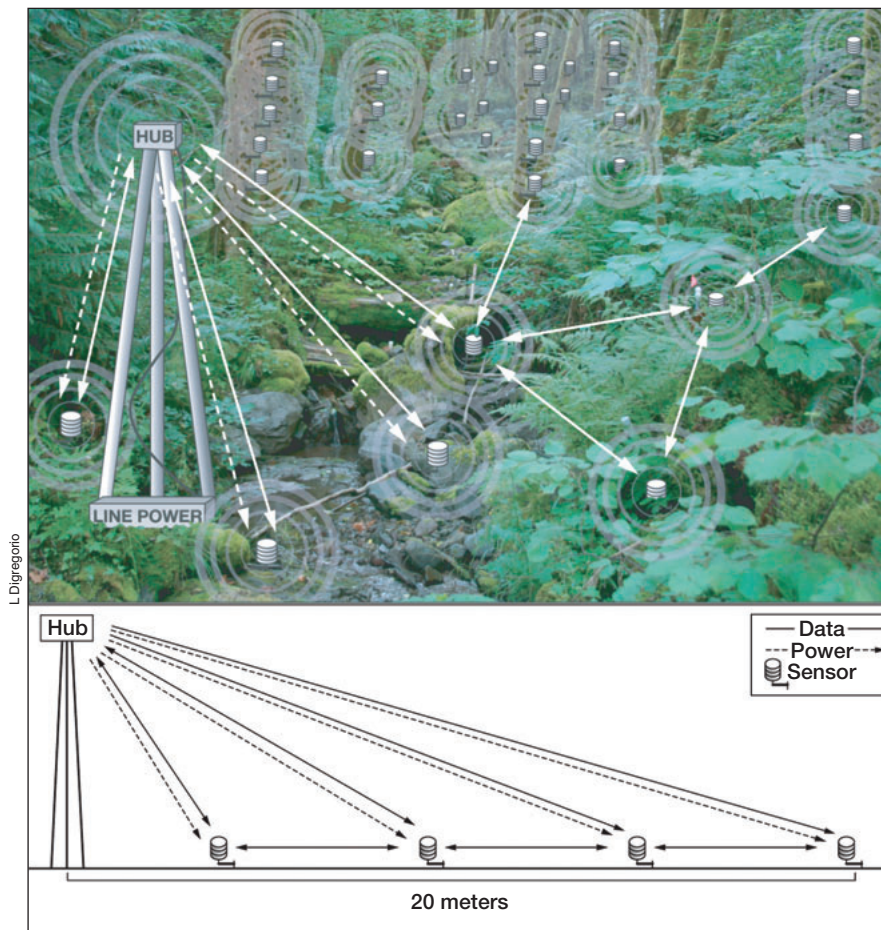


Figure 3. A passively powered sensor network system in development at Oregon State University, featuring power distribution from a central hub to an array of battery-free sensors, and data communications from sensors back to the hub. Both power and data communication rely on RF waves. As currently designed, the sensors measure temperature, but future configurations will use different types of sensors (revised from Le *et al.* 2008).

for example, by balancing power consumption evenly across the network through the introduction of “network intelligence”. Intelligent networks have the potential to assess and respond to the energy status of individual sensor nodes and evenly distribute the energy required for data collection, processing, and transmission. Intelligence is designed into networks through triggered changes in sensor duty cycles (eg sleep/work modes) and the ability to self-organize the network into sensor clusters with shared power burdens. Self-organization means that individual sensor nodes can “ally” themselves either with other nodes with similar power consumption rates or around a central node with better access to power, for the purpose of data transmission. These central nodes can carry more of the transmission energy burden and thus reduce the need for parallel transmission paths from nodes with less access to power. The organization of nodes into common networks can be self-induced, based on the power status of each node, or induced from outside the network via instructions sent by a computer base station (Intanagonwiwat *et al.* 2003; Cha *et al.* 2007). The power consumed during data

transmission is exponentially proportional to transmission distance (Rajaraman 2002). The use of self-organizing transmission designs can therefore minimize transmission distances and power consumption.

■ Achieving robust, efficient, and scalable wireless networking

Wireless collection of data from a network of sensor nodes provides great flexibility by eliminating the need to string wire from node to node; however, this can cause a number of problems. Unreliable communication links can drop data at any point in the wireless network. Error protection techniques that improve reliability must be achieved efficiently, given the limited memory and energy lifetime of resource-constrained sensor nodes. A hierarchical wireless networking architecture is emerging that will eventually allow sensor networks to consist of thousands of nodes (Mainwaring *et al.* 2002; Werner-Allen *et al.* 2006). For example, researchers at the Universities of Colorado and Montana jointly deployed a hierarchical wireless sensor network to study weather factors surrounding forest fires in the Bitterroot National Forest of Idaho (Hartung *et al.* 2006). The long-range wireless network consisted of a series of WiFi links with directional antennae, each with a range of up to 50

km. Short-range wireless sensor networks were attached to the long-range wireless network at strategic points of scientific interest (eg a chosen mountainside). The short-range sensor networks collected local sensor data and relayed them to the long-range network, which then relayed them to a base camp with a satellite uplink to the internet. Using this hierarchical relay, the wireless network was able to cover large areas in an efficient, targeted manner.

■ Management and analysis of real-time data

Sensor-based observing systems present new challenges for managing and analyzing data. The large volumes of data produced, and the need to process data in near-real-time, require new information-processing solutions. An instrumented lake buoy – sampling once per minute – generates several megabytes of data per day, whereas video sensors and flux towers produce much greater volumes of data. As sensor networks are scaled to handle hundreds to thousands of sensors across a wide-area network, the need for automation intensifies. Both science and system operation

can require real-time data acquisition and processing. Rapid detection of important patterns within data streams can provide opportunities for efficient system diagnostics and repair, minimizing any loss of measurements. Real-time data-stream processing can also allow adaptive control of measurements in response to environmental conditions (eg adjusting sampling rates, instrument activation, or orientation).

A partnership (the “Autoscaling Group”) of computer scientists (from the University of California, San Diego [UCSD], State University of New York–Binghamton, and Indiana University) and ecologists (from the North Temperate Lakes Long Term Ecological Research site, affiliated with the University of Wisconsin–Madison) developed prototypes of several open-source (defined in Panel 1) tools (Figure 4) to automate data processing and accommodate growth and changes in large sensor networks. These tools include (1) a real-time data acquisition system, in which data flow directly from sensors to publicly accessible databases; (2) a common data model for the integration of diverse measurements; and (3) tools for data retrieval, system administration, and status monitoring. These components (described below) are engineered as modules that can be customized for specific applications and integrated with other system components as needed.

Scalability

Scalability is a desirable property of a system, indicating that it accommodates well to growth in demands on the system (such as increases in the number of sensor nodes). To address the scalability of real-time data acquisition and processing, the Autoscaling Group adopted a streaming data middleware (Panel 1) approach, in which data from sensors are handled as continuous, real-time streams. Because observing systems incorporate various instruments from several vendors and developers, efficient system management requires integration of these diverse instruments into a cyberinfrastructure (Panel 1) framework. Based on the experiences of the Autoscaling Group, UCSD computer science and engineering researchers collaborated with Creare Inc, the original developers of the DataTurbine streaming data middleware system (www.dataturbine.org). They published the DataTurbine system as open-source software and developed extensions to adapt the system to the requirements of environmental observing systems (Tilak *et al.* 2007). DataTurbine was enhanced with device interfaces to assorted sensors, dataloggers, and video cameras. It has been used for a wide variety of research purposes, including NASA (National Aeronautics and Space Administration) airborne sensing projects, earth-

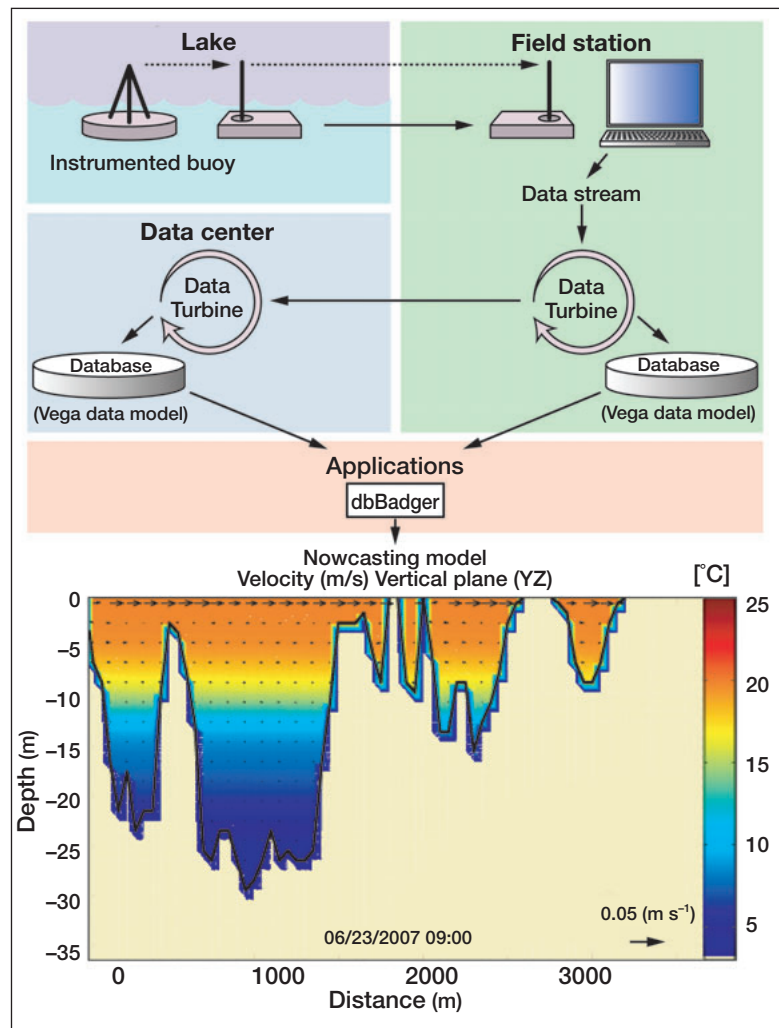


Figure 4. Conceptual architecture integrating components for a real-time modeling example, in which real-time wind data from the instrumented buoy drive the hydrodynamic model in nowcasting mode. Information management system components (described in the text) include streaming data middleware (DataTurbine), two data sinks (a local database at the field station and a centralized shared database, both based on the Vega data model), and an application (dbBadger) that automates database interactions and data handling. Graphical output from the model shows flow vectors, where the length of the arrow indicates the magnitude of the velocity and temperature is depicted by a color scale.

quake simulation experiments, and underwater cameras focused on coral reefs. It has also been tested in lake monitoring applications at several sites.

Storing and retrieving data

How sensor data are stored in a database critically affects both the automation of system configuration and the flexibility of data retrieval. The Autoscaling Group has developed a new data model (Panel 1), Vega (Winslow *et al.* 2008), and the ability to integrate it with streaming data protocols. This data model accommodates reconfigurations of the sensor network, such as the addition of new sensors, without changes to the database schema. The Vega data model was inspired by the Consortium for the Advancement of Hydrologic

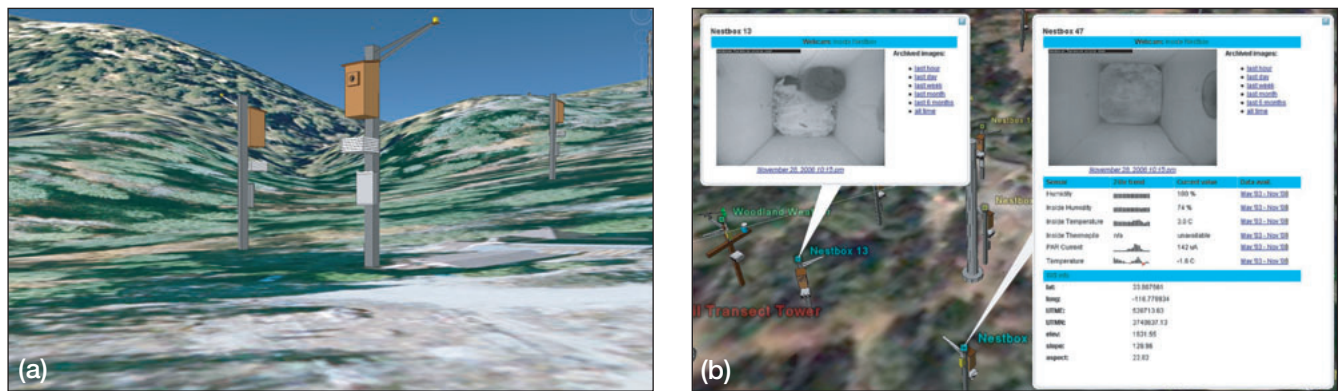


Figure 5. Sensing in the virtual nest box: Google Earth Pro provides a navigable 3D interface to sensors and cameras inside dozens of avian nest boxes, situated throughout the James Reserve in California's San Jacinto Mountains. Users can "fly" through graphical representations of the boxes (a) and, by clicking on one, activate data windows (b) for viewing real-time and archival environmental data (inside and outside temperature, humidity, light, and thermal signature) and interval photography of the interior and its inhabitants. This interface also provides URLs to access a web-based data query tool for specialized searches.

Sciences Incorporated (CUAHSI) Data Model (Observation Data Model, ODM; Horsburgh *et al.* 2008). The data model has been used in an information management system package currently deployed at several sites in the Global Lakes Ecological Observatory Network (GLEON; www.gleon.org) – a grassroots network of limnologists, information technology experts, and engineers who have a common goal of building a scalable, persistent network of lake ecology observatories (Kratz *et al.* 2006).

Integration with models in near-real-time

A software tool developed for GLEON (dbBadger) has been used to run a hydrodynamic model that predicts lake circulation and water temperature distribution (Yuan and Wu 2006; Kimura 2007). In the so-called "nowcasting" mode, real-time wind data drive the hydrodynamic model (Figure 4) that predicts lake circulation. In the prototype nowcasting system, dbBadger handles all database interactions and data handling to retrieve and prepare data for modeling, thereby freeing the modeler from basic data-management tasks.

Data visualization interface

A group of collaborators at the James Reserve in California confronted the management and data access challenges for

an extensive embedded sensor system by developing an integrated data visualization interface. The James Reserve Google Earth layer (Figure 5) ties together more than 300 in situ sensor nodes (fixed and mobile platforms managing environmental, physiology, chemical, and imaging sensors) into a single visualization interface (Hamilton *et al.* 2007). Google Earth allows for straightforward integration of a diverse array of sensing systems with web-based data visualization tools in use at the James Reserve (Askay 2006). The interface provides realistic three-dimensional (3D) representations of sensor equipment, current snapshots from the reserve's various imaging networks, quick access to current and time-series sensor measurement graphs, and the integration of various Geographic Information Systems thematic layers.

■ New approaches to training researchers in next-generation technology

In order for sensor networks to be used effectively to address critical questions in the environmental sciences, we need to train scientists who can work well across disciplinary boundaries and to form new, interdisciplinary collaborations. This need is leading to the introduction of several formal and informal training programs, but we believe the technology is currently expanding more rapidly than is the preparation of the workforce to use this technology.

Panel 1. Definitions of selected terms

Open-source software: software whose license allows unrestricted modification and redistribution, rights that are usually reserved for the author.

Cyberinfrastructure: infrastructure based on distributed computer, information, and communication technologies, consisting of enabling hardware, software, communications, institutions, and personnel. The goal is to provide an effective platform for communities of researchers to innovate and eventually revolutionize what they do, how they do it, and who participates (Atkins *et al.* 2003).

Streaming data middleware: a layer of software that moves data from sensors to a publicly accessible database and provides a range of services. For example, DataTurbine, a streaming data middleware system, provides reliable data transport, a framework for integrating heterogeneous instruments, and a comprehensive suite of services for data management, routing, synchronization, monitoring, and visualization.

Data model or data schema: a description of the organization of a database.

Innovative programs are emerging in higher education to train environmental scientists and engineers who can then collaborate effectively. For example, at Oregon State University, a National Science Foundation (NSF)-funded IGERT (Integrative Graduate Education, Research, and Training) in Ecosystem Informatics program trains graduate students to apply computer science, mathematics, and sensor networking technology to ecological problems (<http://ecoinformatics.oregonstate.edu/>). The graduate students also serve as instructors and mentors for undergraduates in a new EcoInformatics Summer Institute – a 10-week program of team-based research that recruits math, computer science, engineering, and environmental science majors from around the US. At UCLA, CENS offers summer training for graduate students and professionals working in sensing technology for the soil environment, in addition to its undergraduate internships for engineering and biology students, geared specifically toward underrepresented groups.

All of the emerging “Environmental Observatory Networks” include an education component (eg D’Avanzo *et al.* 2008). Education and training are also a focus of smaller groups, such as GLEON. Through meetings that address both emerging science and technology issues, web interfaces for sharing expertise, assistance with deployment of sensors and information systems, and opportunities for students to learn skills at the aquatics/information technology interface, GLEON promotes a shared vision of a global network of hundreds of lakes with instrumented buoys collecting real-time sensor data, selected strategically around the globe.

There is also a growing number of training workshops that bring together teams of experts and groups of students for intensive, hands-on learning. These workshops typically provide course credit for students, but they may also include scientists from academia and industry, both as instructors and as students. For example, in the summer of 2008, a two-week course, *Flux measurements and advanced modeling*, was organized at the University of Colorado’s Mountain Research Station, and is intended to continue in following summers. The course included 22 graduate students from nine countries and invited lecturers from several disciplines. Of particular importance was the participation of Campbell Scientific Inc and LiCor Inc, leading companies in the development of monitoring instrumentation. Representatives of both companies gave lectures and provided the students with opportunities for learning more about advanced sensor and datalogger technologies through explanations of underlying theory and hands-on training in the use of sensor and datalogger instruments.

A further example involves a series of workshops co-sponsored by the NSF and CUAHSI, which featured strong industry participation (Selker 2008). Graduate students, industry representatives, and university faculty representing several disciplines worked in teams to design and implement innovative field research activities involving state-of-the-art sensor

technology. This type of workshop provides an exciting and efficient venue for training students and introducing new technology to seasoned scientists. The collaborations inspire the formation of partnerships that provide the basis for ongoing technological developments.

■ Conclusions

The use of automated sensing systems in environmental science is rapidly expanding (Porter *et al.* 2009). However, realizing the potential of sensor-based observing systems to transform advances in environmental science involves some major challenges. Partnerships of ecologists with computer scientists and engineers are leading to the development of next-generation technology for sensor networks designed to meet these challenges.

Although barriers to communication still exist between environmental scientists, computer scientists, and engineers, these communities are demonstrating that they can work together effectively. Currently, the biggest limitation to these partnerships is funding. Innovative funding mechanisms for research and education are urgently needed, as most traditional funding does not accommodate these multidisciplinary activities. Moreover, it is not sufficient to fund prototype projects at the cutting-edge of technology; the science based on these new sensor networks requires the development of fully mature technology products. Maximum benefit will come through funding the development of widely usable tools; local collaborations in system design have an important role to play, but we need to move beyond “one-off” solutions.

Often throughout the history of science, new tools advance more rapidly than the science that uses them. The resulting scales and volumes of data will generate novel scientific questions and models. We need to train the next generation of scientists to conduct research in this expanded information environment.

■ Acknowledgments

T Fiez, T Dietterich, T Fountain, S Tilak, T McMahon, M Smith, S Oncley, J Jones, D Tullow, J Selker, P Kirsch, and L Winslow provided insights and information. We thank our collaborators in the projects described in this paper, as well as B Feeny and A Kennedy for assistance in developing figures. We gratefully acknowledge our sponsors, including NSF, the Natural Reserve System, industrial partners, the Gordon and Betty Moore Foundation, and the authors’ institutions. In particular, we want to acknowledge our intrepid field engineers, programmers, and hardware developers. This research is supported by grants from the NSF, including CENS STC (#0120778), NIMS ITR (#0331481), AMARSS biocomplexity (#0410408), DBI-05292230, CNS/SENSORS-0330466, Andrews LTER (#0904115), North Temperate Lakes

LTER DEB-0217533, DBI-0843037, NEON 0446802, NEON 0446017, DBI-0639229, and DBI/SST-0528793.

References

- Allen MP, Graham E, Ahmadian S, *et al.* 2008. Interactive environmental sensing: signal and image processing challenges. 33rd International Conference on Acoustics, Speech, and Signal Processing (ICASSP); 30 Mar – 4 Apr 2008; Las Vegas, NV. Los Angeles, CA: Center for Embedded Networked Sensing/UCLA.
- Arzberger P, Bonner J, Fries D, and Sanderson A. 2005. Sensors for environmental observatories: report of the NSF sponsored workshop, December 2004. Baltimore, MD: World Technology Evaluation Center (WTEC).
- Askay S. 2006. New visualization tools for environmental sensor networks: using Google Earth as an interface to micro-climate and multimedia datasets. Los Angeles, CA: Center for Embedded Networked Sensing/UCLA. <http://repositories.cdlib.org/cens/techrep/3>. Viewed 24 Apr 2009.
- Atkins DE, Droegemeier KK, Feldman SI, *et al.* 2003. Revolutionizing science and engineering through cyberinfrastructure: report of the National Science Foundation Blue-Ribbon Advisory Panel on cyberinfrastructure. Washington, DC: NSF. <http://nsf.gov/od/oci/reports/toc.jsp>. Viewed 24 Apr 2009.
- Belton P and Costello RA. 1979. Flight sounds of the females of some mosquitoes of western Canada. *Entomol Exp Appl* **26**: 105–14.
- Caprio MA, Huang JX, Faver MK, and Moore A. 2001. Characterization of male and female wing-beat frequencies in the *Anopheles quadrimaculatus* complex in Mississippi. *J Am Mosq Assoc* **17**: 186–89.
- Casper ET, Paul JH, Smith MC, and Gray M. 2004. Detection and quantification of the red tide dinoflagellate *Karenia brevis* by real-time nucleic acid sequence based amplification. *Appl Environ Microbiol* **70**: 4727–32.
- Cha SH, Lee JE, Jo M, *et al.* 2007. Policy-based management for self-managing wireless sensor networks. *IEICE T Commun* **E90B**: 3024–33.
- Compton J. 1991. Nucleic-acid sequence-based amplification. *Nature* **350**: 91–92.
- D'Avanzo C, Henderson S, Hollweg K, *et al.* 2008. NEON education and outreach strategic plan version 1.0. Boulder, CO: NEON Inc.
- Graham EA, Yuen EM, Robertson GF, *et al.* 2009. Budburst and leaf area expansion measured with a novel mobile camera system and simple color thresholding. *Environ Exp Bot* **65**: 238–44.
- Greenfield DI, Marin III R, Jensen S, *et al.* 2006. Oceanography: methods. *Limnol Oceanogr-Meth* **4**: 426–35.
- Hamilton MP, Rundel PW, Allen MA, *et al.* 2007. New approaches in embedded networked sensing for terrestrial ecological observatories. *Environ Eng Sci* **24**: 192–204.
- Hartung C, Holbrook S, Han R, and Seielstad C. 2006. FireWxNet: a multi-tiered portable wireless system for monitoring weather conditions in wildland fire environments. Fourth International Conference on Mobile Systems, Applications, and Services; 19–22 Jun 2006; Uppsala, Sweden. New York, NY: ACM.
- Horsburgh JS, Tarboton DG, Maidment DR, and Zaslavsky I. 2008. A relational model for environmental and water resource data. *Water Resour Res* **44**: W05406.
- Intanagonwiwat C, Govindan R, Estrin D, *et al.* 2003. Directed diffusion for wireless sensor networking. *IEEE ACM T Network* **11**: 2–16.
- Jones WJ, Preston CM, Marin III R, *et al.* 2008. A robotic molecular method for in situ detection of marine invertebrate larvae. *Mol Ecol Resour* **8**: 540–50.
- Kaiser WJ, Sukhatme GS, and the MAS Team. 2007. An overview of multiscale actuation and sensing. Los Angeles, CA: Center for Embedded Networked Sensing/UCLA. <http://repositories.cdlib.org/cgi/viewcontent.cgi?article=2140&context=cens>. Viewed 24 Apr 2009.
- Kimura N. 2007. Simulation and observation of motions and temperatures in small and medium size lakes (PhD dissertation). Madison, WI: University of Wisconsin.
- Kratz TK, Arzberger P, Benson BJ, *et al.* 2006. Towards a global lake ecological observatory network. *Publ Karelian Inst* **145**: 51–63.
- Larios N, Deng H, Zhang W, *et al.* 2007. Automated insect identification through concatenated histograms of local appearance features. *Mach Vision Appl*. doi:10.1007/s00138-007-0086-y.
- Le T, Fiez TS, and Mayaram K. 2006. Efficient far-field radio frequency power conversion system for passively powered sensor networks. San Jose, CA: IEEE.
- Le TT, Fiez TS, and Mayaram K. 2008. Efficient far-field radio frequency energy harvesting for passively powered sensor networks. Proceedings of the 2006 Custom Integrated Circuits Conference; 10–13 Sep 2006; San Jose, CA. San Jose, CA: IEEE.
- Lowry C, Walker JE, Hunt RJ, and Anderson MP. 2007. Identifying spatial variability of groundwater discharge in a wetland stream using a distributed temperature sensor. *Water Resour Res* **44**: W10408.
- Mainwaring A, Polastre J, Szewczyk R, *et al.* 2002. Wireless sensor networks for habitat monitoring. First ACM Workshop on Wireless Sensor Networks and Applications; 28 Sep 2002; Atlanta, GA. New York, NY: Association for Computing Machinery.
- Moore A and Miller RH. 2002. Automated identification of optically sensed aphid (Homoptera: Aphidae) wingbeat waveforms. *Ann Entomol Soc Am* **95**: 1–8.
- Moore A, Miller JR, Tabashnik BE, and Gage SH. 1986. Automated identification of flying insects by analysis of wingbeat frequencies. *J Econ Entomol* **79**: 1703–06.
- Oncley SP, Schwenz K, Burns SP, *et al.* 2009. A cable-borne tram for atmospheric measurements along transects. *J Atmos Ocean Tech* **26**: 462–73.
- Porter J, Arzberger P, Hanson PC, *et al.* 2005. Wireless sensor networks for ecology. *BioScience* **55**: 561–72.
- Porter JH, Nagy ES, Hanson PC, *et al.* 2009. New eyes on the world: advanced sensors for ecology. *BioScience* **59**: 385–97.
- Rajaraman R. 2002. Topology control and routing in ad hoc networks: a survey. *ACM SIGACT News* **33**: 60–73.
- Richardson AD, Jenkins JP, Braswell BH, *et al.* 2007. Use of digital webcam images to track spring green-up in a deciduous broadleaf forest. *Oecologia* **152**: 323–34.
- Selker JS. 2008. Taking the temperature of ecological systems with fiber optics. *Eos Am Geophys Union Trans* **89**: 187.
- Selker JS, Thévenaz L, Huwald H, *et al.* 2006a. Distributed fiber optic temperature sensing for hydrologic systems. *Water Resour Res*. doi:10.1029/2006WR005326.
- Selker JS, van de Giesen N, Westhoff M, *et al.* 2006b. Fiber optics opens window on stream dynamics. *Geophys Res Lett*. doi:10.1029/2006GL027979.
- Smith MC, Steimle G, Ivanov S, *et al.* 2007. An integrated portable hand-held analyser for real-time isothermal nucleic acid amplification. *Anal Chim Acta* **598**: 286–94.
- Tilak S, Hubbard P, Miller M, and Fountain T. 2007. The Ring Buffer Network Bus (RBNB) DataTurbine streaming data middleware for environmental observing systems. 3rd IEEE International Conference on e-Science and Grid Computing; 10–13 Dec 2007; Bangalore, India. San Jose, CA: IEEE.
- Werner-Allen G, Lorincz K, Ruiz M, *et al.* 2006. Deploying a wireless sensor network on an active volcano. *IEEE Internet Comput Mar/Apr*: 18–25.
- Westhoff MC, Savenije HHG, Luzemburg WMJ, *et al.* 2007. A distributed stream temperature model using high resolution temperature observations. *Hydrol Earth Syst Sci* **11**: 1469–80.
- Winslow LA, Benson BJ, Chiu KE, *et al.* 2008. Vega: a flexible data model for environmental time series data. In: Gries C and Jones MB (Eds). Proceedings of the Environmental Information Management Conference 2008; 10–11 Sep 2008; Albuquerque, NM. <https://conference.ecoinformatics.org/public/conferences/1/eim-2008-proceedings.pdf>.
- Yuan H and Wu CH. 2006. Fully nonhydrostatic modeling of surface waves. *J Mech Eng* **132**: 447–56.