

#2323

Vegetation Change and the Role of Atmospheric CO₂ Enrichment on a Relict Site in Central Oregon: 1960–1994

Paul A. Knapp* and Peter T. Soulé**

*Department of Geography, Georgia State University

**Department of Geography and Planning, Appalachian State University

An emerging paradigm in ecological studies challenges the concepts of ecosystem stability and ecological balance of plant communities. Johnson and Mayeux (1992) argue that the species-constant climax theory is incorrect because of the rarity of stable plant assemblages. Change in vegetation composition and dominance should be viewed not as unusual or unnatural, but as a normal component of ecosystem dynamics. That said, the rate and direction of vegetation change are important, especially if changes are enhanced by anthropogenic processes such as elevated levels of atmospheric CO₂ resulting from deforestation and the combustion of fossil fuels. The purpose of this research is to determine if atmospheric CO₂ enrichment has been a contributory cause of vegetation change on a relict area in central Oregon.

The role of humans in altering vegetation communities in the arid and semiarid rangelands of the American West has been, and likely will continue to be, significant (Webb et al. 1987; Knapp 1991; 1992). Numerous studies (e.g., Hastings and Turner 1965; Rogers 1982; Bahre 1991; Veblen and Lorenz 1991) chronicle historic vegetation changes in the American West following occupation by settlers of European descent. These studies attribute vegetation change to four broad causes: changes in fire regimes, changes in grazing intensities, cyclic trends in climate, and extensive logging. While all of these factors have influenced various vegetation associations within the West, substantial evidence suggests an additional cause for vegetation change.

In an extensive literature review of traditional vegetation change mechanisms, Mayeux et al. (1991:65) stated that "no compelling evidence exists which substantiates that any single one

or combination of them [factors] is responsible." In support of this view, changes in rangeland vegetation on a global scale appear to be occurring regardless of land-stewardship practices (Mayeux et al. 1991). For example, in the big sagebrush-dominated (*Artemisia tridentata* Nutt.) vegetation of the southern Great Basin Desert, Hunter (1991) documented substantial increases in cheatgrass (*Bromus tectorum* L.) cover and frequency on the Nevada Test Site since the 1960s and in the absence of human activities. In a study of a western juniper (*Juniperus occidentalis* Hook) stand in northeastern California, Young and Evans (1981) determined that none of the common hypotheses (i.e., fire, grazing, and climatic shifts) adequately explained juniper invasion into big sagebrush communities. LaMarche et al. (1984), Graybill (1987), and Graybill and Idso (1993) showed that growth patterns in bristlecone pine (*Pinus longaeva* D. K. Bailey) and limber pine (*P. flexilis* James) at sites above 3100 m in the American West over the past 200 years vastly exceeded growth rates typical of the preceding millennium. The rapidly rising growth rates of these trees, they concluded, may be a function of rising CO₂ content in the atmosphere over the same period. Finally, several researchers (e.g., Hays 1991; Idso 1992; Johnson et al. 1993) have suggested that the worldwide invasion of grasslands by trees and shrubs is consistent with results of laboratory studies of plants exposed to atmospheric CO₂ enrichment.

One theory advanced to explain vegetation change in the absence of either significant anthropogenic or climatic variations rests on empirical observations of differential (but positive) plant responses to increases in atmospheric CO₂ concentrations (Idso 1989). The principal

..... 583
..... 584
-Urban 587
..... 589
hart 590
yckoff 592
scape, 593
..... 595
ic P. Perramond 596
Victor Konrad. 598
..... 599
Modern World, 602
..... 603
..... 605
stic Work in 607
ns, by Neil Smith 608
alconer Al-Hindi. 610
ton 611
Shadows of Tender
Army of National
istóbal, Mexico, 614

physiological effects of aerial CO₂ fertilization are enhanced photosynthetic rates coupled with reduced transpiration rates for most species (Rozema 1993; Garcia et al. 1994). Kimball's (1983:779) review of 437 observations of 37 species exposed to a doubling of atmospheric CO₂ (from 330 ppm to 660 ppm) indicated that agricultural yield increased by approximately 33 percent. Similarly, Kimball and Idso (1983:61), analyzing results from 46 experiments with 18 different crop species exposed to CO₂ doubling, determined that mean transpiration rates were lowered by approximately 34 percent. Plants that grow in CO₂ enriched environments, moreover, tend to be larger and taller, have more and thicker leaves, more branches or tillers, and greater root systems than similar plants growing under ambient (normal CO₂) conditions (Idso 1989).

Given CO₂'s potential as a causative factor of rangeland vegetation change, we returned to the Island Research Natural Area (IRNA), a relict sagebrush-steppe vegetation association in semiarid central Oregon, and replicated Driscoll's 1960 vegetation survey (1962; 1964). As a site for a repeat study, this one is ideal since it represents one of the few minimally disturbed sagebrush-steppe environments of the United States. Specifically, we compared vegetation changes over a 34-year period and analyzed the "fit" of these changes with expected changes in plant growth attributable to increases in atmospheric CO₂ concentration (i.e., greater foliage production and increased water-use efficiency [WUE]) (Kimball and Idso 1983; Garcia et al. 1994). These atmospheric changes should favor a shift toward greater dominance of woody species for four reasons: first, an increase in WUE favors the expansion of woody species previously held in check by insufficient precipitation (Idso 1989); second, these woody species typically produce greater foliage than competing non-woody species, thereby outcompeting them for light (Johnson et al. 1993); third, as Idso and Kimball (1993) have shown, trees are considerably more responsive than non-woody plants to atmospheric CO₂ enrichment; and fourth, as Johnson et al. (1993) have noted, these effects on woody species should be subject to the "compound interest law of plant growth" (Blackman 1919:35?) whereby the differences between those species that benefit the most and those that benefit the least widens with time.

Our study addresses three specific questions. First, how did vegetation composition, cover, and density at the IRNA change from 1960 to 1994? Second, if changes did occur, were these changes consistent with what would be expected as a result of CO₂ aerial fertilization? Third, are these vegetation changes a function of multiple factors working in concert (i.e., fire, climatic variability, grazing, pathogens) or, in the absence of these, of CO₂ enrichment? Answers to these questions may help shed light on the current debate over the indirect effects of human activities (such as CO₂ enrichment) on native vegetation communities—especially in a semiarid environment that is particularly sensitive to this type of change.

Consequences of CO₂ Enrichment on Plant Growth

Increased water-use efficiency (the ratio of photosynthesis to transpiration) is one of the major consequences of CO₂ enrichment (Mayeux et al. 1991). Polley et al. (1993) estimate that WUE may have increased approximately 27 percent in C₃ plants during the last 200 years as a result of decreased transpiration (because of decreases in stomatal conductance), increased assimilation, and the combination of the two (Eamus 1991). Idso (1989) found that doubling atmospheric CO₂ led to a doubling of WUE, and that this result was consistent among different species. Given that current atmospheric CO₂ concentrations are approximately 360 ppmv (Figure 1; Keeling and Whorf 1994), some scholars (Mayeux et al. 1991) believe that increases in atmospheric CO₂ are a viable cause for rangeland vegetation changes. Worldwide, the increases in CO₂ in the last century have been particularly dramatic, rising from approximately 296 ppmv in 1899 (Neftel et al. 1994) to 317 ppmv in 1960 (Figure 1; Keeling and Whorf 1994). The rise to 360 ppv between 1960 to 1994 alone represents a 14 percent increase.

Most research concerning the effects of CO₂ enrichment has been conducted in laboratory settings, and it is unclear whether results from these studies can be extrapolated into natural environments (Mayeux et al. 1993; Mooney et al. 1991). The primary problem is that it is difficult to separate human impacts from natu-

three specific ques-
 etation composition,
 IRNA change from
 f changes did occur,
 onsistent with what
 result of CO₂ aerial
 these vegetation
 multiple factors working
 tic variability, grazing,
 ence of these, of CO₂
 these questions may
 rrent debate over the
 n activities (such as
 tive vegetation com-
 semiarid environment
 itive to this type of

CO₂ ant Growth

fficiency (the ratio of
 iration) is one of the
 of CO₂ enrichment
 olley et al. (1993) esti-
 ve increased approxi-
 plants during the last
 decreased transpiration
 in stomatal conduc-
 tion, and the combi-
 nus 1991). Idso (1989)
 ospheric CO₂ led to a
 hat this result was con-
 species. Given that cur-
 concentrations are ap-
 (Figure 1; Keeling and
 holars (Mayeux et al.
 reases in atmospheric
 for rangeland vegeta-
 ie, the increases in CO₂
 e been particularly dra-
 approximately 296 ppmv in
) to 317 ppmv in 1960
 Whorf 1994). The rise
 1960 to 1994 alone rep-
 rease.
 ning the effects of CO₂
 onducted in laboratory
 ar whether results from
 xtrapolated into natural
 et al. 1993; Mooney
 ry problem is that it is
 an impacts from natu-

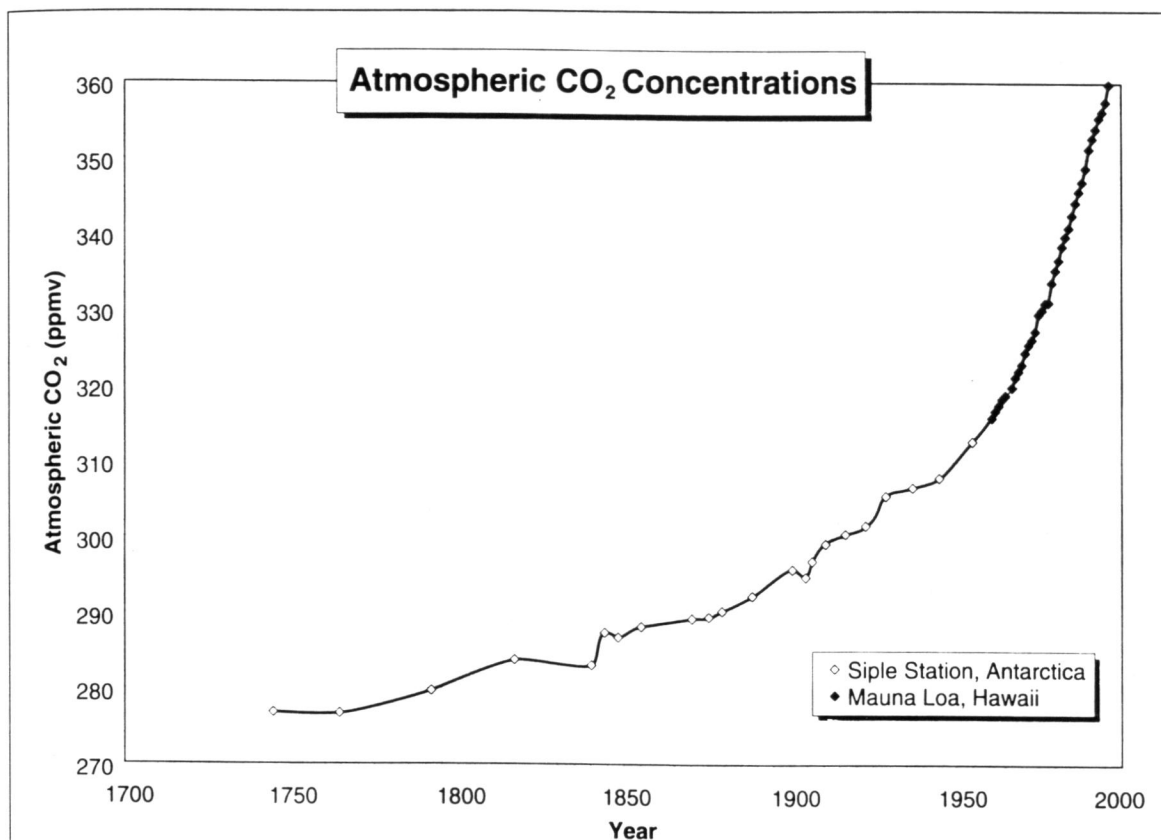


Figure 1. Atmospheric carbon dioxide concentrations from 1744 to present. Data prior to 1959 (open diamonds) are from Siple Station, Antarctica Ice Cores (Neftel et al. 1994), while post-1958 data (solid diamonds) are from Mauna Loa, Hawaii air samples (Keeling and Whorf 1994).

ral environmental influences on plant growth. Moreover, other factors that may influence plant growth, such as soil nutrient status, may differ substantially between controlled laboratory experiments and natural environments. Finally, the duration of these studies is often short, with observations ranging from days (e.g., Sionit and Patterson 1984) to months (e.g., Sage et al. 1989) to a few years (e.g., Surano et al. 1986; Bazzaz et al. 1993), although the sour orange tree study of Idso and Kimball (1993) will soon have spanned a full decade.

Studies of elevated atmospheric CO₂ concentrations and native plant communities have been conducted on a Chesapeake Bay coast salt marsh (Curtis et al. 1989a; 1989b; 1990; Drake and Leadly 1991) and Arctic tussock tundra (Oechel and Riechers 1986; Tissue and Oechel 1987). In these studies, the marsh ecosystem largely responded positively to in-

creased CO₂ while the Arctic tundra generally did not. The latter's ecosystem response appears to be limited because the benefits of elevated CO₂ concentrations are muted by consistently low temperatures (Idso 1989) and the frozen soil that makes most nutrients inaccessible (Tissue and Oechel 1987). Regrettably, field studies have not been conducted in natural ecosystems where the effects of CO₂ enrichment are most likely to be expressed—arid and semiarid rangelands (Mooney et al. 1991; Mayeux et al. 1994).

Study Area

The Island Research Natural Area (IRNA), a relict area in semiarid central Oregon at 44° 34' N, 121° 16' W (Figure 2), is under the management of the Prineville, Oregon Bureau of Land Management (BLM) District and the

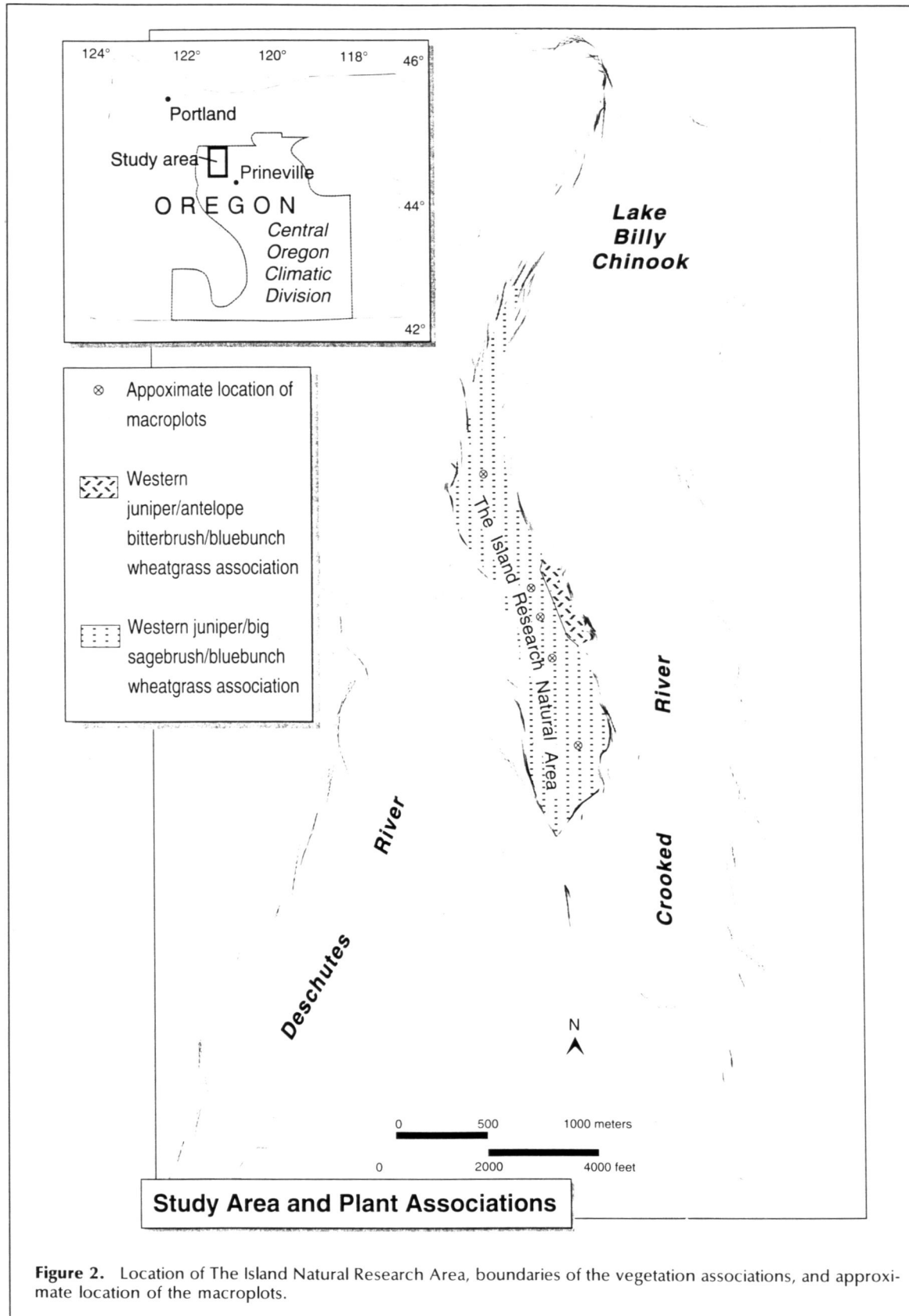


Figure 2. Location of The Island Natural Research Area, boundaries of the vegetation associations, and approximate location of the macroplots.

Croc
an "
Rese
1991
direc
Direc
ple e
two s
tic sh
coll 1
teau
Descl
ceptic
vertic
stricte
slope.
IRN
cipitat
half th
nearb



Figure 3.
by author

Crooked River National Grasslands. Classified an "Area of Critical Environmental Concern/Research Natural Area" (Figure 2; Halvorson 1991), IRNA has been free of grazing and other direct human influences for nearly 70 years. Direct human impacts to IRNA, other than people examining the area, have been confined to two successive summers of grazing by domestic sheep in the 1920s (Halvorson 1991; Driscoll 1995). IRNA occupies 78 ha of basaltic plateau at the confluence of the Crooked and Deschutes Rivers and is hemmed, with the exception of the south slope, by 60 to 215 m vertical cliffs (Driscoll 1964). Access is restricted to a steep, crude trail on the southwest slope. Thus, human use is limited.

IRNA's climate is semiarid with winter precipitation (primarily snow) accounting for over half the annual total of 25 cm. Temperatures at nearby Prineville show strong continentality

with July and January means of 18.1°C and -0.4°C, respectively (Karl et al. 1990).

IRNA contains two distinct vegetation associations: 1) the western juniper/big sagebrush/bluebunch wheatgrass association (*Juniperus occidentalis*/*Artemisia tridentata* Nutt./*Agropyron spicatum* Pursh) occupying approximately 67 ha; and 2) the western juniper/antelope bitterbrush/bluebunch wheatgrass association (*J. occidentalis*/*Purshia tridentata* Pursh/*Agropyron spicatum*) occupying approximately 11 ha (Figures 2, 3, and 4; Driscoll 1964). Other common species are Sandberg bluegrass (*Poa secunda* Vasey) and Thurber's needlegrass (*Stipa thurberiana* Piper). A 1960 and 1961 inventory of vegetation composition, cover, and constancy (Driscoll 1964) identified 22 species (other species located on the site were either vernal and unidentifiable or scarce). Soils on the juniper/sagebrush/wheatgrass association

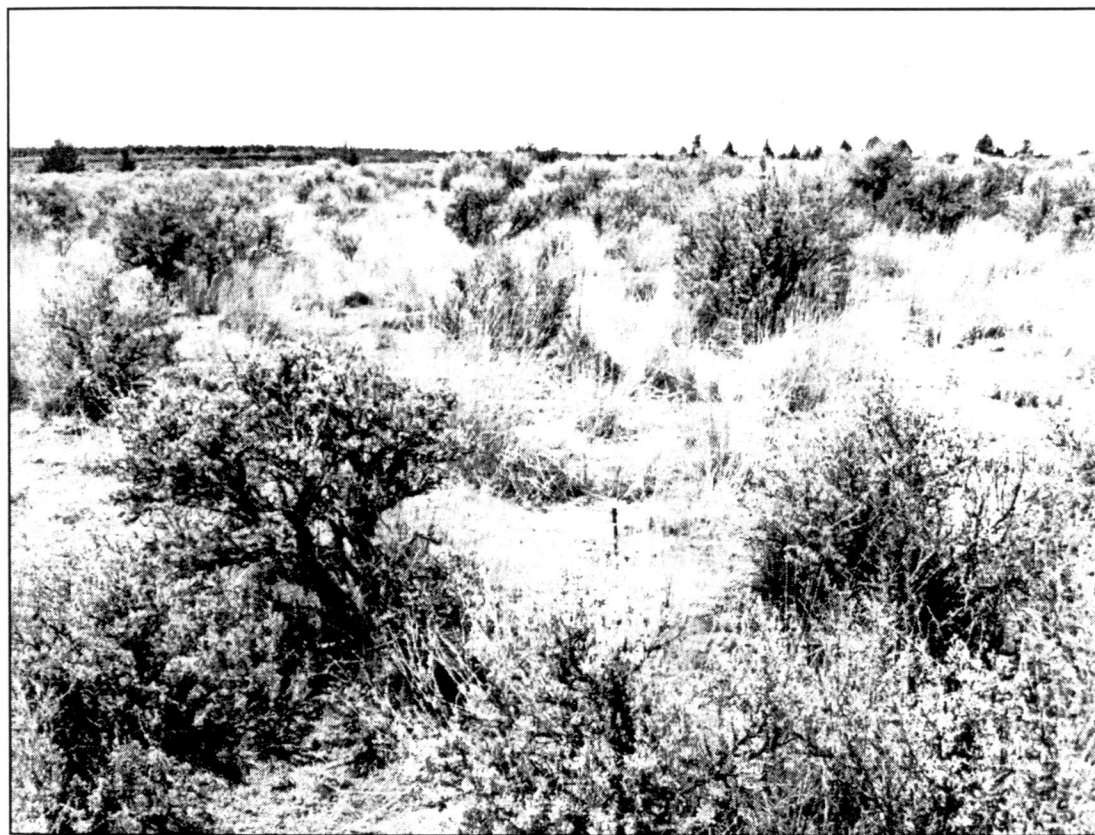


Figure 3. Big sagebrush and bunchgrasses. Typical cover and density on macroplot #5 at IRNA. Photograph by authors.

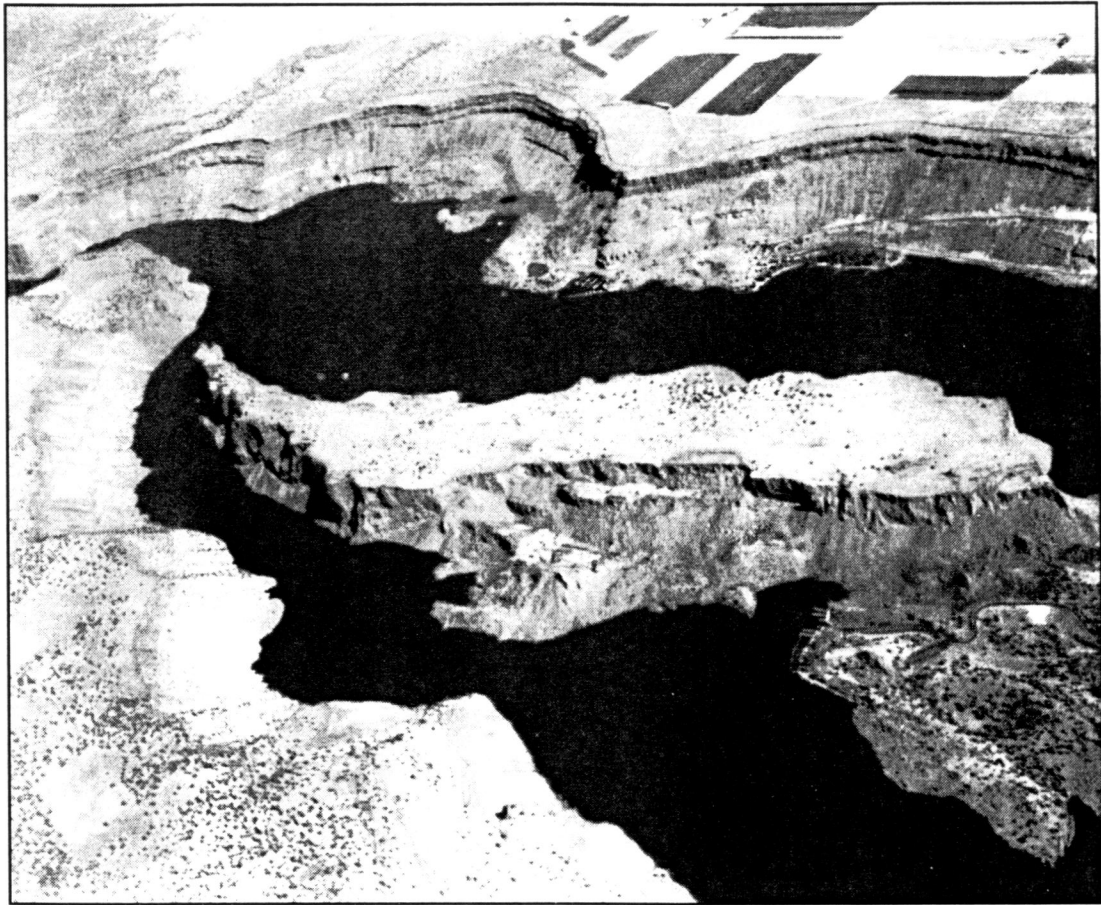


Figure 4. Aerial photograph of IRNA looking east. Lake Billy Chinook surrounds all but the south end of IRNA. October 1994. Photograph by Thom Martin.

are two types of Brown loams comprised of different parent materials, one from lake-laid sediments, the other from loess and very fine sands (Driscoll 1962). Soil chemistry values range between pH 6.5 to pH 7.0 (Driscoll 1964). Soil on the juniper/bitterbrush/wheatgrass association is classified as a sandy loam Regosol of aeolian origin with surface pH values ranging from 6.0 to 6.5 (Driscoll 1964). Vegetation is grazed by native herbivores and granivores, including Rocky Mountain mule deer (*Odocoileus hemionus*), cottontail rabbits (*Sylvilagus nuttalli*), western harvester ants (*Pogonomyrmex owyheei*), mice (*Microtus* sp.), chipmunks (*Eutamias* sp.), and ground squirrels (*Citellus* sp.) (Driscoll 1964; personal observations 1994). Clearings by western harvester

ants are abundant throughout IRNA, while the grazing impacts of mule deer are modest, probably because of the lack of a water source.

Data and Methods

Driscoll's Benchmark Data:

Driscoll (1962; 1964) measured five components of vegetation: 1) individual species foliage cover; 2) basal area and total foliage cover of perennial herbs; 3) foliage cover of shrubby and suffrutescent species; 4) maximum average height of mature shrubby and suffrutescent species; and 5) densities of shrubby and suffrutescent species.

Driscoll (1962; 1964) examined vegetation on five 15.25 × 30.5 m (50 × 100') permanent macroplots within the *Juniperus/Artemisia/Agropyron* vegetation association of IRNA during July and August of 1960. Within each macroplot, four 15.25 m line transects were set in restricted random fashion and marked with rebar stakes. Ten observation plots of 0.3 × 0.6 m (1' × 2') were systematically placed along each transect and the percentage of herbaceous species foliage cover and the basal areas of perennial herbaceous species were estimated by eye. While ocular estimation lends itself to considerable subjectivity, Driscoll (1994) minimized subjectivity by placing concentric rings (representing 2 percent, 5 percent, and 10 percent of the area of the observation plots) on the vegetation to ensure more consistent measurements. He measured shrub cover where the 15.25 m line transects intercepted the shrubs; shrub density (by species) on each macroplot by counting the number of individuals located within a 1.22 m (4') belt transect that bisected the line transect (total area per macroplot: 37.2 m² (400 ft²); average maximum height of adult shrubs (by species) by measuring those within the belt transects; and percentage cover of western juniper for the entire IRNA by measurements from aerial photographs (Driscoll 1962; 1964).

Comparison of Data: 1960–1994

Using methods identical to Driscoll's, we replicated his vegetation survey (with the exception of the juniper survey) in late June, 1994. We located all five of Driscoll's macroplots and 15 of his 20 rebar-marked transects within them. The five transects we could not find were located randomly within the macroplots. This does not invalidate our comparisons because of the consistency of vegetation within the macroplots (this was part of Driscoll's selection criteria). The data for 1960 and 1994 were compared using difference-of-means tests. In the case of our western juniper survey, we analyzed aerial photos of IRNA taken in 1961, 1979, 1985, and 1994. Percentage cover and density values of western junipers were based on mean values of three sample counts for each photograph. Counting the number of trees on IRNA yielded tree density. Percentage tree cover was determined by

placing a dot-grid transparency overlay (25 dots per 1.25 cm², 0.2 cm apart) on the photographs. Dots intersecting junipers in relation to the total number of dots intersecting IRNA were then counted and converted into a percentage (Lillesand and Kiefer 1994).

Results

Shrub, Tree, and Herbaceous Cover

Vegetation change on IRNA over the last 34 years is characterized by large increases in woody species, modest change in perennial grasses, and a reduction in annuals (Table 1). While the total number of species with measurable cover decreased from 16 in 1960 to 12 in 1994, we found that total perennial cover increased by 11 percent—from 28 percent in 1960 to 39 percent in 1994 (a relative increase of 39 percent over 1960 values). While big sagebrush and bluebunch wheatgrass provided the greatest cover in both 1960 and 1994, their relative importance switched during the 34-year period. Big sagebrush increased significantly from 1960 to 1994 (nearly doubling from 8.5 to 15.6 percent). Rubber rabbitbrush (*Chrysothamnus nauseosus* Pall.) decreased from 1.1 to 0 percent. Of the four perennial grasses recorded in both 1960 and 1994, only Thurber's needlegrass increased in both absolute and relative cover. In terms of relative cover, perennial herbaceous species decreased from one-half of total cover to a little more than one-third, while shrub cover increased from one-third to two-fifths.

Western juniper cover more than doubled from 1961 (Table 2). Comparisons of aerial photographs taken in 1961, 1979, 1985, and 1994 show that the rate of increase was greatest between 1961 and 1979, but slowed (while still increasing) thereafter. We found numerous saplings throughout IRNA in June 1994. These young trees would have been too small to identify on the aerial photograph, but they suggest that future increases in juniper cover are probable.

Two annual grasses were also recorded, cheatgrass and sixweeks fescue (*Vulpia octoflora* Rydb.), both of which decreased in absolute and relative abundance from 1960. The annual grass cover recorded in June 1994 may have been remnant from the previous year.



South end of IRNA.

IRNA, while the trees are modest, there is a water source.

The five component species foliage cover and percentage cover of shrubby species are modest, and maximum average and suffructescent shrubby and

Table 1. Vegetation Cover, Composition, and Frequency by Classes and Species in IRNA Surveys of 1960 and 1994.

	1960			1994			Frequency ^c
	Cover ^a	Composition ^b	Standard Error	Cover	Composition	Standard Error	
Classes							
Total perennial herbs	14.2	50.0	—	14.0	35.5	1.32	245
Total shrubs	9.6	33.8	—	15.6	39.6	1.70	—
Total tree	4.6	16.2	—	9.8	24.9	0.46	—
Total perennial vegetation	28.4	100.0	—	39.4	100.0	—	—
Total annual vegetation	2.4	—	—	0.2	—	0.11	16
Total all vegetation	30.8	—	—	39.6	—	—	351
Species							
<i>Juniperus occidentalis</i> ^d	4.6	16.2	0.2	9.8 ^f	24.9	0.46	—
<i>Artemisia tridentata</i>	8.5	29.9	2.4	15.6 ^f	39.6	2.35	—
<i>Chrysothamnus nauseosus</i>	1.1	3.9	—	—	—	—	—
<i>Agropyron spicatum</i>	9.2	32.4	0.5	8.7 ^f	22.1	1.02	101
<i>Stipa thurberiana</i>	2.0	7.0	—	2.9	7.4	0.49	66
<i>Bromus tectorum</i> (A)	1.7	—	—	0.11	—	0.03	14
<i>Poa secunda</i>	1.3	4.6	0.3	1.7 ^f	4.3	0.35	31
<i>Lomatium triternatum</i>	0.6	2.1	—	0.2	0.5	0.06	11
<i>Vulpia octoflora</i> (A)	0.6	—	—	0.1	0.3	0.10	1
<i>Festuca idahoensis</i>	0.4	1.4	—	0.6	1.5	0.13	34
<i>Astragalus</i> sp.	0.3	1.0	—	—	—	0.00	0
<i>Agoseris</i> sp.	0.1	0.3	—	—	—	0.00	0
<i>Achillea millefolium</i>	0.1	0.3	—	0.0 ^e	—	0.01	1
<i>Collinsia parviflora</i> (A)	0.1	0.3	—	—	—	0.00	0
<i>Sitanion hystrix</i>	0.1	0.3	—	—	—	0.00	0
<i>Phlox douglasii</i>	0.1	0.3	—	—	—	0.00	0
<i>Cryptantha ambigua</i> (A)	—	—	—	0.0	—	0.01	1
<i>Eriogonum umbellatum</i>	—	—	—	0.0	—	0.01	1

Notes:^aCover and composition values and standard errors from (Driscoll 1962).^bComposition represents relative amounts of perennial species based on foliar cover.^cFrequency represents the number of microplots where a species was present. Data for frequency collected on microplots only.^dJuniper values determined by the authors' interpretation of 1961 and 1994 air photos.^eValues of 0.0 indicate species present, but with cover < 0.1 percent.^fA statistically significant difference based on independent Student t-test ($\alpha = 0.01$).

(A) = annual species.

The 1993 seasonal water-year (July 1, 1993 to June 30, 1994) was below average (7th driest on record), so little moisture was available for germination and growth of the annuals in the spring of 1994. Additionally, little snow fell during the previous winter, so the previous year's growth of annuals would not have matted down. By way of comparison, Driscoll may have experienced similar conditions in the summer of 1960 when precipitation during the 1959 seasonal water-year was also below average (the 27th driest on record). The reduction in the number of species recorded may also have been a function of drier conditions in 1994.

Tree and Shrub Density, Shrub Heights

Both western juniper and big sagebrush density increased from 1960 (Tables 2 and 3). Tree density was 41 percent greater in 1994, and the density of big sagebrush increased significantly (by 115 percent). Rubber rabbitbrush density continued to be a minor component. The mean maximum height of big sagebrush was significantly greater—increasing by 50 percent. Basal area of perennial herbs also increased by 40 percent during the last 34 years. We have less confidence in this measurement, however, since it was difficult to distinguish with certainty the difference between live and dead biomass.

Table 2. Mean Number and Cover (percent) of *Juniperus occidentalis* on IRNA as Interpreted from Aerial Photographs^a.

Year	Number	Cover (percent)	Standard Error of Cover	Format	Approximate Scale	Mean Annual Precipitation (cm) ^b
1961	419	4.6	0.23	B&W	1:16,800	—
1979	526	8.7 ^c	0.23	B&W	1:8,950	27.8
1985	562	9.2 ^c	0.71	Blueprint	1:6,000	31.34
1994	590	9.8 ^c	0.46	Color	1:15,450	23.2

Notes: ^aAerial photographs were obtained from BLM (1961), Agricultural Stabilization and Conservation Service (1979), Oregon Department of Transportation (1985), and Thom Martin (1994).

^bThis value represents the average seasonal water-year precipitation for Prineville during the period between photographs (e.g., 27.8 cm = the mean annual precipitation between 1961 and 1979). Source: Karl et al. 1990.

^cCover is significantly different ($\alpha = 0.05$) from the 1961 value.

Confounding Influences

One of the most challenging questions for studies of vegetation change is how much of it is caused by humans and how much by natural environmental fluctuations? One of these human impacts is, of course, the increasing atmospheric concentrations of CO₂ that accompanied the post-1800 industrial revolution. In order to assess the potential effects of CO₂ enrichment, it is necessary to study areas in non-laboratory settings where other human impacts and the impacts of fire, climate, and biotic influences have been minimal. Our study area satisfies these research conditions.

Climate

Since major changes in the regional macroclimate of IRNA could have influenced the structure and composition of the natural vegetation in the area, we examined various climate parameters for long-term trends and for sig-

nificant differences between specific time periods.

Macroclimate Data. Climatic data for IRNA come from the South Central Climatic Division of Oregon (SCOR) and the Prineville 4NW weather station (Figure 2). Climatic division data (NCDC 1989), regionally derived and corrected for potential biases, are commonly used in examinations of long-term climatic conditions in the United States (e.g., Karl and Koscielny 1982; Diaz 1983; Soulé 1992). The Prineville station is the closest station to IRNA that is also included in the United States Historical Climatology Network (HCN). This station is approximately 43 kilometers southeast and 143 meters higher than IRNA. The HCN data for temperature and precipitation are regarded as the highest-quality data available for United States' stations. The data have been subjected to rigorous quality control checks and are corrected for biases in time-of-observation, instrument, and station movement (Karl et al. 1990). We obtained a complete record of

Table 3. Mean Values and Standard Errors of Perennial Basal Area on the IRNA Site.

	1960		1994	
	Value	Standard Error	Value	Standard Error
Basal area perennial herbs (percent)	6.6	0.7	9.23	0.89
Mean maximum height of <i>Artemisia tridentata</i> (cm)	59.4	3.35	89.39	3.27
Density count of <i>Artemisia tridentata</i>	26	3.2	56	0.46
Mean maximum height of <i>Chrysothamnus nauseosus</i>	61.9	—	71.20	—
Density count of <i>Chrysothamnus nauseosus</i>	4	—	1	—

Source: Driscoll 1962; authors' field surveys.

es in IRNA

Frequency ^c
245
—
—
16
351
—
—
101
66
14
31
11
1
34
0
0
1
0
0
1
1

ed on microplots

ib Heights

g sagebrush den-
les 2 and 3). Tree
ter in 1994, and
h increased sig-
bber rabbitbrush
inor component.
of big sagebrush
easing by 50 per-
al herbs also in-
the last 34 years.
his measurement,
ult to distinguish
between live and

mean monthly temperature and total precipitation for the period January 1895 to June 1994 for SCOR, and mean monthly temperature and precipitation data for Prineville for the period January 1900 to June 1994. Since HCN data were only available through April 1994, data for May and June of 1994 were obtained directly from the Office of the State Climatologist for Oregon (Taylor 1994). The Prineville record included 15 months of missing data (13 months of 1134 missing for temperature, 2 missing for precipitation). The majority (11) of the missing months for temperature occurred prior to 1927, and never did they run for more than two consecutive months. Missing data were replaced with HCN data from the nearby Bend station, located 50 kilometers south of IRNA at 1113 meters elevation (Figure 2). Missing precipitation data were transcribed directly from Bend, and temperature data were transcribed after correcting for elevation. In one instance (missing temperature data for December 1901), data were also missing for Bend, so the observation was replaced directly with data from the SCOR data set.

Macroclimate Methods. Because precipitation is largely concentrated in the low-sun season in central Oregon (Sneva 1982), we calculated mean temperature and total precipitation based on July-to-June, or seasonal water-year, observations. We tested for significant differences in precipitation and temperature between discrete time periods using the Wilcoxon Rank Sum *W* Test and a null hypothesis of no significant difference in the climatic parameters between time periods, with a 0.05 level of significance. Since there were 34 years separating the two vegetation surveys, we tested for differences between the 34-year periods between the two surveys (1960–1993) and prior to Driscoll's survey (1926–1959). We also tested for differences between the 1960–1993 period and the remaining period of record (1900–1959 for Prineville data, 1895–1959 for SCOR data). Since Goldberg and Turner (1986) have shown that vegetation in arid regions can exhibit significant responses over brief periods (as short as 8–10 years), climatic variables were compared between the periods 1950–1959 and 1984–1993 using both the Wilcoxon test and a ranking scheme that shows how individual years in these two periods compare to observations over the period of record.

The climatic data were examined for linear trends over the two 34-year periods prior to vegetation sampling (1926–1959, 1960–1993) and over the combined 68-year period (1926–1993). We used temperature and precipitation as the dependent variables and seasonal water-year as the independent variable in a series of bivariate regressions. Numerous studies (e.g., Karl et al. 1986; Karl and Heim 1990; Plantico et al. 1990; Idso and Balling 1992; Yin 1993) have established the use of bivariate regression for trend analyses of climatic variables. We examined directional change in the climatic variables with trend slopes from the bivariate regression, and tested for significance in the trends using rank correlation (Yin 1993). For graphic presentation of long-term temperature and precipitation data, a weighted low-pass filter was used to smooth the time series (Panofsky and Brier 1968). The filter used is:

$$X_i = 0.06(i - 2) + 0.25(i - 1) + 0.38(i) + 0.25(i - 1) + 0.06(i - 2), \quad (1)$$

where X_i is the smoothed seasonal water-year temperature or precipitation and i = the current year in the time series.

Macroclimate Results. The long-term precipitation records of Prineville and SCOR clearly illustrate the semiarid character of IRNA region (Table 4). In all cases the precipitation totals for the climatic division exceeded those of Prineville. Although the magnitude differs slightly, the Prineville and SCOR precipitation time series are strongly in-phase ($r = 0.83$ for a simple correlation of 1900–1993 data). Accordingly, we only present graphical results for Prineville. The 94-year pattern of seasonal water-year precipitation at Prineville shows that this region may experience considerable inter-year variability (Figure 5). The weighted low-pass filter shows that sustained directional changes in precipitation are generally on the order of 10 years or less.

Precipitation comparisons between the 34- and 10-year periods prior to the vegetation surveys yielded mixed results (Table 4). Although the 34-year period prior to Driscoll's survey was slightly drier and had less inter-year variability, comparisons of the 10-year periods show slightly wetter conditions with greater inter-year variability in the early period. Monotonic changes are not evident in either of the

Table 4. Annual Precipitation (cm) for Seasonal Water-Year (July to June) at Prineville, Oregon and the South-Central Climatic Division of Oregon.

Location and Years	N	Annual Mean	Standard Deviation	Median	High	Low
Prineville 1900–1993	94	24.9	6.5	24.1	43.0	11.6
South Central 1895–1993	99	30.5	6.1	30.1	45.5	18.0
Prineville 1926–1959	34	24.7	7.1	24.1	43.0	11.6
South Central 1926–1959	34	30.6	6.5	30.2	45.5	19.9
Prineville 1960–1993	34	26.4	7.4	25.6	39.7	12.4
South Central 1960–1993	34	30.8	6.9	29.5	42.7	18.0
Prineville 1950–1959	10	27.6	8.5	26.5	43.0	13.3
South Central 1950–1959	10	32.7	7.7	32.8	45.5	20.9
Prineville 1984–1993	10	23.4	6.6	23.4	35.7	12.9
South Central 1984–1993	10	28.4	5.7	27.9	41.9	22.6

Sources: NCDC 1989; Karl et al. 1990.

34-year periods (Figure 5). This observation is supported by the linear-trend analysis (Table 5) that indicates weak and insignificant positive trends in the early period (1926–1959) and even weaker trends in the later period (1960–

1993). Precipitation trends over the 64-year period are also insignificant (Table 5).

Mean seasonal water-year temperatures at Prineville are consistently higher than the regionally averaged measures for SCOR, with

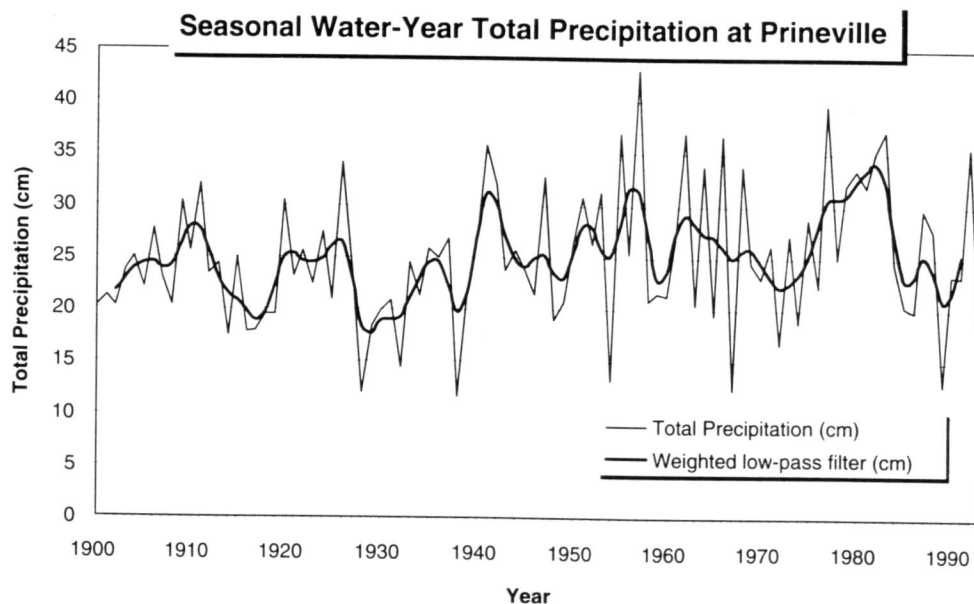


Figure 5. Season water-year (July–June) precipitation (cm) at Prineville, Oregon, 1900–1993. Source: Karl et al. 1990.

Table 5. Climatic Parameters and Time: Bivariate Regression Slopes, Spearman Rank Correlation Coefficients, and Associated p-values.

Data Source	Variable	N	Time Period	Regression Slope	Spearman's r_s	p-value Spearman's r_s
Prineville	ppt.	68	1926–1993	0.061006	0.158	0.1991
South Central	ppt.	68	1926–1993	0.024952	0.048	0.7005
Prineville	ppt.	34	1926–1959	0.213655	0.270	0.1219
South Central	ppt.	34	1926–1959	0.189904	0.256	0.1440
Prineville	ppt.	34	1960–1993	-0.035762	-0.039	0.8262
South Central	ppt.	34	1960–1993	-0.033965	-0.065	0.7139
Prineville	temp	68	1926–1993	0.013435	0.394	0.0009 ^a
South Central	temp	68	1926–1993	0.004884	0.171	0.1631
Prineville	temp	34	1926–1959	-0.002269	-0.003	0.9877
South Central	temp	34	1926–1959	-0.009030	-0.094	0.5976
Prineville	temp	34	1960–1993	0.010958	0.171	0.3349
South Central	temp	34	1960–1993	0.015248	0.230	0.1913

Note: ^atrends significant at $\alpha = 0.05$.
Sources: NCDC 1989; Karl et al. 1990.

means for the former falling between 8 and 9° for all averaging periods (Table 6). As with precipitation, the temporal patterns are strongly in-phase ($r = 0.79$ for the 90-year period) between Prineville and SCOR. Although temperatures at Prineville do show a significant positive trend over the period 1926–1993 (Table 5), the trend was nearly flat for the early 34-year period and weakly positive for the late 34-year period, with most of the increase occurring between the late 1940s and late 1970s (Figure 6). A closer inspection of the 1926–1959

period and 1960–1993 period clearly shows the combination of slightly higher temperatures and lower inter-year variability in the later period (Figure 6).

The 10-year period prior to the replicate survey was both hotter and received less precipitation than the 10-year period prior to Driscoll's survey. This is evident in both the descriptive statistics (Tables 4 and 6) and in rank comparisons for temperature (Table 7) and precipitation (Table 8). Both 10-year periods show a wide range in total precipitation, with years

Table 6. Descriptive Temperature (°C) Statistics for Seasonal Water-Year (July to June) at Prineville, Oregon and the South-Central Climatic Division of Oregon.

Location and Years	N	Annual Mean	Standard Deviation	Median	High	Low
Prineville 1900–1993	94	8.4	0.7	8.4	10.5	6.9
South Central 1895–1993	99	7.9	0.7	7.8	10.2	5.7
Prineville 1926–1959	34	8.1	0.7	8.1	10.1	6.9
South Central 1926–1959	34	7.8	0.7	7.9	10.2	6.4
Prineville 1960–1993	34	8.6	0.6	8.6	10.5	7.4
South Central 1960–1993	34	8.0	0.6	8.0	10.1	7.1
Prineville 1950–1959	10	8.2	0.6	8.1	8.8	7.2
South Central 1950–1959	10	7.8	0.7	7.9	8.8	6.6
Prineville 1984–1993	10	8.8	0.8	8.7	10.5	7.6
South Central 1984–1993	10	8.3	0.8	8.3	10.1	7.3

Sources: NCDC 1989; Karl et al. 1990.

an Rank Correlation

r_s	p-value Spearman's r_s
3	0.1991
3	0.7005
3	0.1219
5	0.1440
9	0.8262
5	0.7139
4	0.0009 ^a
1	0.1631
3	0.9877
4	0.5976
1	0.3349
0	0.1913

period clearly shows
tly higher tempera-
r variability in the later

or to the replicate sur-
received less precipi-
period prior to Driscoll's
both the descriptive
and in rank compari-
able 7) and precipita-
-year periods show a
precipitation, with years

ar (July to June) at
Oregon.

Median	High	Low
3.4	10.5	6.9
7.8	10.2	5.7
3.1	10.1	6.9
7.9	10.2	6.4
3.6	10.5	7.4
3.0	10.1	7.1
3.1	8.8	7.2
7.9	8.8	6.6
3.7	10.5	7.6
3.3	10.1	7.3

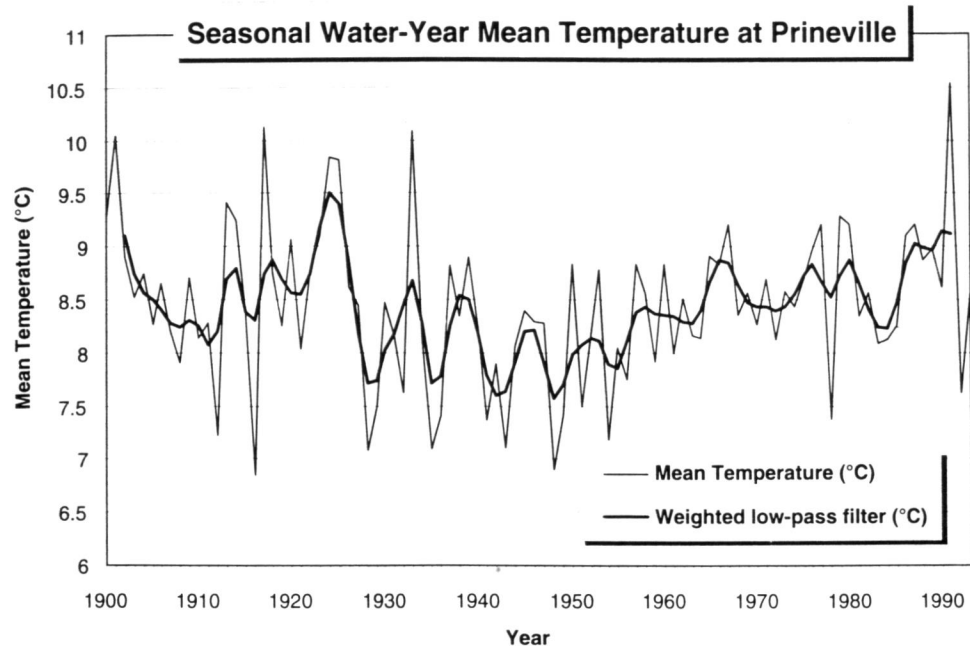


Figure 6. Seasonal water-year (July–June) temperature (°C) at Prineville, Oregon, 1900–1993. Source: Karl et al. 1990.

ranked among the top ten wettest and driest at Prineville and SCOR.

Variability (from above- to below-normal) in the thermal and moisture characteristics of both the short- (10-year) and longer-term (≥ 34 -year) periods is evident for all parameters examined. The lack of stability and persistence of the climatic parameters in the IRNA region support the finding of no significant differences in precipitation between any of the time period comparisons (Table 9). Temperature exhibits significant differences between the early and late 34- and 10-year periods at Prineville (the post-1960 periods being warmer), but all other comparisons indicate no significant differences (Table 9).

We also examined the 24-month periods prior to Driscoll's vegetation survey (July 1958 to June 1960 or the early period) and our replicate survey (July 1992 to June 1994 or the late period) because of the possibility of vegetation change caused by short-term variability (Mueggler 1992). The Prineville precipitation record shows that total precipitation over the early 24-month period was 42.4 cm as com-

pared to 52.1 cm for the late period. A Wilcoxon test indicated no significant differences in precipitation between the two 24-month periods ($p = 0.4212$; Figure 7). Monthly mean temperatures for the two periods were generally in-phase (Figure 8), with a 24-month mean of 8.2° C for the early period and 8.1° C for the late period. A Wilcoxon test showed no significant difference in temperature between the periods ($p = 0.9343$).

Relating Macroclimatic Change to Vegetation.

Clearly, the climate is not stable. Regime changes from wetter-to-drier than normal and hotter-to-cooler than normal can occur over short time periods in the IRNA region and have occurred within the time periods prior to the initial and replicate vegetation surveys. Note, however, that the climatic parameter most critical for vegetation growth (precipitation) is not significantly different for the periods prior to both vegetation surveys.

Microclimate. When Driscoll conducted his vegetation survey in 1960, the IRNA was

Table 7. 94-Year and 99-Year Rankings of Seasonal Water-Year (July to June) Temperatures (°C) at Prineville, Oregon and the South Central Climatic Division of Oregon, Respectively, for the 10-Year Period Preceding Driscoll's Vegetation Survey and the 10-Year Period Preceding the 1994 Replicate Survey.

Prineville, Oregon					
1950 to 1959			1984 to 1993		
Rank ^a	Year	Temp (°C)	Rank	Year	Temp (°C)
6 ^b	1954	7.2	15	1992	7.6
13	1951	7.5	26	1984	8.1
16	1956	7.8	36	1985	8.3
19	1959	7.9	55	1993	8.6
22	1955	8.1	57	1990	8.6
32	1952	8.2	72	1988	8.9
52	1958	8.6	77	1989	9.0
66	1953	8.8	80	1986	9.1
70	1950	8.8	84	1987	9.2
71	1957	8.8	94 ^c	1991	10.5
$\Sigma_{\text{rank}} = 367$			$\Sigma_{\text{rank}} = 596$		
$\bar{X}_{\text{rank}} = 36.7$			$\bar{X}_{\text{rank}} = 59.6$		

South Central Climatic Division, Oregon					
1950 to 1959			1984 to 1993		
Rank ^a	Year	Temp (°C)	Rank	Year	Temp (°C)
4 ^b	1954	6.6	16	1984	7.3
12	1951	7.2	24	1992	7.4
25	1955	7.4	54	1985	7.9
27	1956	7.5	68	1993	8.1
39	1959	7.7	75	1990	8.2
55	1952	8.0	79	1988	8.3
63	1957	8.1	82	1989	8.4
80	1953	8.4	90 ^c	1987	8.6
81	1950	8.4	93 ^c	1986	8.7
94 ^c	1958	8.8	98 ^c	1991	10.1
$\Sigma_{\text{rank}} = 480$			$\Sigma_{\text{rank}} = 679$		
$\bar{X}_{\text{rank}} = 48.0$			$\bar{X}_{\text{rank}} = 67.9$		

Notes: ^arank is based on 94 years of data (1900–1993) for Prineville and 99 years of data (1895–1993) for the South Central Climatic Division.

^bone of the ten coldest years.

^cone of the ten hottest years.

Sources: NCDC 1989; Karl et al. 1990.

bounded on the west by the Deschutes River and on the east by the Crooked River (Figure 2). The elevation of the two river beds at the time was approximately 550 meters. Subsequent to Driscoll's benchmark study, the Crooked and Deschutes Rivers were dammed, and Lake Billy Chinook was created in 1963. The lake surrounds the IRNA on 3 sides (Fig-

Table 8. 94-Year and 99-Year Rankings of Seasonal Water-Year (July to June) Precipitation (cm) at Prineville, Oregon and the South Central Climatic Division of Oregon, Respectively, for the 10-Year Period Preceding Driscoll's Vegetation Survey and the 10-Year Period Preceding the 1994 Replicate Survey.

Prineville, Oregon					
1950 to 1959			1984 to 1993		
Rank ^a	Year	PPT (cm)	Rank	Year	PPT (cm)
5 ^b	1954	13.3	4 ^b	1989	12.9
27	1958	20.9	7 ^b	1993	16.4
33	1959	21.6	19	1986	19.9
56	1956	25.4	23	1985	20.4
62	1952	26.3	41	1991	23.3
63	1950	26.7	44	1990	23.5
75	1951	30.8	51	1984	24.5
76	1953	31.3	70	1988	27.7
91 ^c	1955	37.0	72	1987	29.8
94 ^c	1957	43.0	87 ^c	1992	35.7
$\Sigma_{\text{rank}} = 582$			$\Sigma_{\text{rank}} = 418$		
$\bar{X}_{\text{rank}} = 58.2$			$\bar{X}_{\text{rank}} = 41.8$		

South Central Climatic Division, Oregon					
1950 to 1959			1984 to 1993		
Rank ^a	Year	PPT (cm)	Rank	Year	PPT (cm)
6 ^b	1954	20.9	7 ^b	1993	22.6
18	1958	24.2	9 ^b	1991	22.9
27	1959	26.8	17	1989	23.8
60	1950	31.9	28	1986	26.9
65	1953	32.6	33	1990	27.3
67	1951	32.9	39	1984	28.4
69	1952	33.4	41	1987	28.6
77	1956	34.9	49	1988	30.0
98 ^c	1957	43.5	58	1985	31.8
99 ^c	1955	45.5	96 ^c	1992	41.9
$\Sigma_{\text{rank}} = 586$			$\Sigma_{\text{rank}} = 377$		
$\bar{X}_{\text{rank}} = 58.6$			$\bar{X}_{\text{rank}} = 37.7$		

Notes: ^arank is based on 94 years of data (1900–1993) for Prineville and 99 years of data (1895–1993) for the South Central Climatic Division.

^bone of the ten driest years.

^cone of the ten wettest years.

Sources: NCDC 1989; Karl et al. 1990.

ure 2), and has a normal pool elevation of 593 meters (USGS 1993).

It is doubtful the creation of Lake Billy Chinook in 1963 had any significant impacts on vegetation growth (e.g., increased precipitation) in the IRNA. Micro-scale oasis effects can be detected over irrigated fields (Fritschen and Nixon 1967; Oke 1987), but the effects (re-

Table 9. Precipitation and Temperature Differences by Periods, Wilcoxon Rank Sum *W* Test Results.

Data Source	Variable	Time Periods Compared	Test p-value	Result
Prineville	ppt.	1900-1959 / 1960-1993	0.1308	accept H ₀
South Central	ppt.	1895-1959 / 1960-1993	0.9237	accept H ₀
Prineville	ppt.	1926-1959 / 1960-1993	0.3481	accept H ₀
South Central	ppt.	1926-1959 / 1960-1993	0.9706	accept H ₀
Prineville	ppt.	1950-1959 / 1984-1993	0.1859	accept H ₀
South Central	ppt.	1950-1959 / 1984-1993	0.1212	accept H ₀
Prineville	temp	1900-1959 / 1960-1993	0.0553	accept H ₀
South Central	temp	1895-1959 / 1960-1993	0.0996	accept H ₀
Prineville	temp	1926-1959 / 1960-1993	0.0005	reject H ₀
South Central	temp	1926-1959 / 1960-1993	0.1999	accept H ₀
Prineville	temp	1950-1959 / 1984-1993	0.0451	reject H ₀
South Central	temp	1950-1959 / 1984-1993	0.2123	accept H ₀

Note: All tests are conducted at $\alpha = 0.05$ with H₀: the distribution of measurements for the two time periods are equal.
Sources: NCDC 1989; Karl et al. 1990.

duced temperature, increased vapor pressure) typically decay rapidly within the first 1.5 m above the surface (Fritschen and Nixon 1967). Further, most microclimatic effects in arid environments are contained within and near (30 m downwind) the boundaries of irrigated areas because convection tends to dominate over advection (Fritschen and Nixon 1967). Because of the vertical distance (averaging over 130 m) from the IRNA plateau to the lake surfaces, the small surface area of the lakes (compared to large-scale irrigation projects of 100,000+ ha), and the well-ventilated nature of the plateau, it is unlikely that oasis effects (whereby relative humidity and vapor pressures would be increased and temperatures decreased over the lake surface [Oke 1987]) would extend to the plateau. If evaporation from the lake surface had any effects on the microclimate of the IRNA plateau, these effects should be most evident at the plateau edge and least evident in the plateau center. We conducted a microclimatic study on the IRNA plateau to test for edge-to-center differences in surface temperature, temperature at 1 m elevation, soil temperature, and relative humidity at 1 m elevation. Results of the microclimatic analysis showed no significant differences in any parameter and that stable conditions prevailed across the plateau.

Fire

Fire likewise may confound our comparison of the 1960 and 1994 vegetation surveys. We were particularly concerned about this issue,

since Driscoll (1964) believed, based on the number of charred stumps and logs present, that fires had influenced the density of western junipers on IRNA. Driscoll also reported that "in a few small areas" fires had eliminated both the tree and shrub associations, and in these areas an herbaceous stratum had become dominant (but not in his macroplots). Conversely, our 1994 survey yielded no evidence of recent fires, though we did find areas where shrub and tree density were low and grass cover was dominant—possibly the same areas mentioned by Driscoll in 1960.

We then examined the fire history of IRNA since 1960. Because the land ownership of IRNA is split between the United States Forest Service (USFS), the Bureau of Land Management (BLM), and Oregon State Parks (OSP), we interviewed personnel from each agency, including the Fire Management Officer for the Prineville BLM, the District Ranger for the Ochoco National Forest, a Naturalist for Cove Palisades State Park (CPSP), and a former CPSP ranger. We also examined a document file for IRNA at the Prineville BLM. By all accounts, only two fires on IRNA have been reported since Driscoll's study. Both occurred on the same day in late August 1987 and both were caused by lightning strikes. The CPSP ranger on duty at the time told us that he and one other CPSP personnel had climbed the trail to IRNA to extinguish the fires (Smith 1994). One lightning bolt had struck a juniper on the southeast end of IRNA, but the fire was out (smoldering) by the time they arrived. The second lightning strike had created a small fire, which burned approximately one-thirtieth of a hec-

99-Year Rankings of
ar (July to June)
neville, Oregon and
imatic Division of
or the 10-Year Period
getation Survey and
receding the 1994
Survey.

Oregon

1984 to 1993

Rank	Year	PPT (cm)
4 ^b	1989	12.9
7 ^b	1993	16.4
19	1986	19.9
23	1985	20.4
41	1991	23.3
44	1990	23.5
51	1984	24.5
70	1988	27.7
72	1987	29.8
87 ^c	1992	35.7

$$\sum_{\text{rank}} = 418$$

$$\bar{X}_{\text{rank}} = 41.8$$

ic Division, Oregon

1984 to 1993

Rank	Year	PPT (cm)
7 ^b	1993	22.6
9 ^b	1991	22.9
17	1989	23.8
28	1986	26.9
33	1990	27.3
39	1984	28.4
41	1987	28.6
49	1988	30.0
58	1985	31.8
96 ^c	1992	41.9

$$\sum_{\text{rank}} = 377$$

$$\bar{X}_{\text{rank}} = 37.7$$

ears of data (1900-1993) for
i (1895-1993) for the South

al. 1990.

al pool elevation of 593

ation of Lake Billy Chi-
v significant impacts on
g., increased precipita-
o-scale oasis effects can
ited fields (Fritschen and
7), but the effects (re-

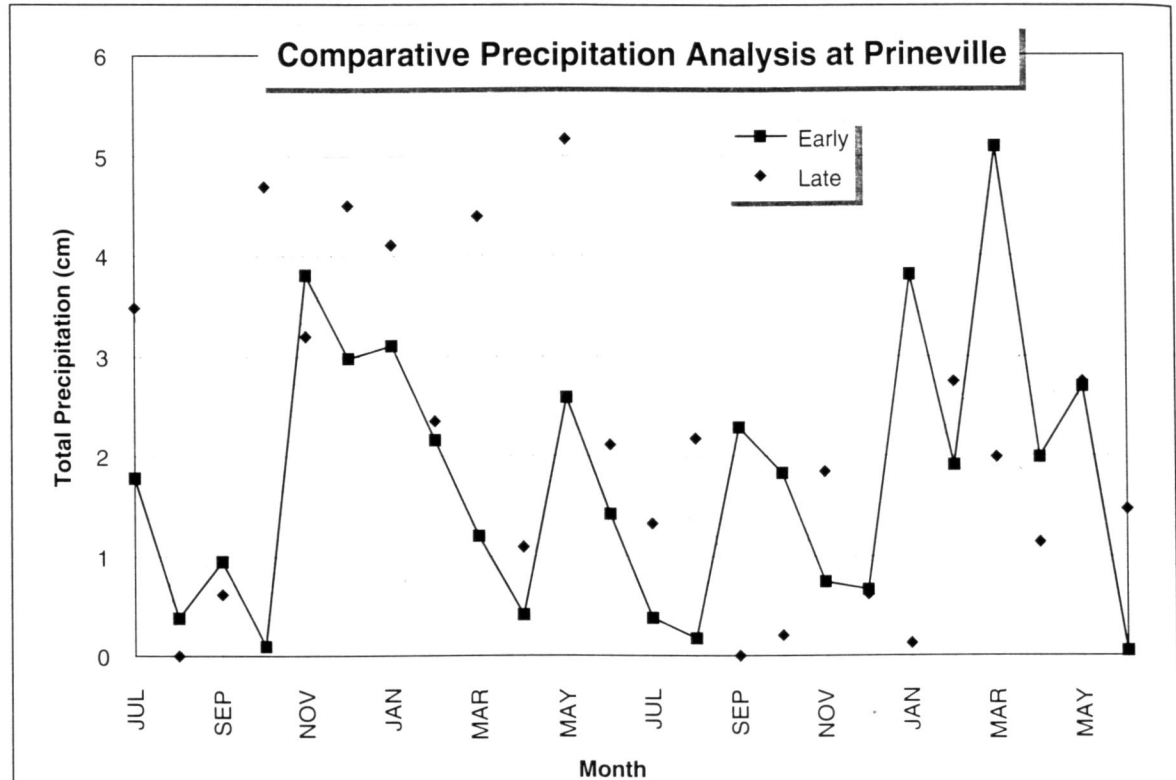


Figure 7. Comparison of monthly precipitation (cm) at Prineville, Oregon in the 24-month period prior to Driscoll's vegetation survey (July 1958 to June 1960—early) and the 24-month period prior to the replicate survey (July 1992 to June 1994—late). Source: Karl et al. 1990.

ture (9 m × 36 m) near the northwest rim before it was extinguished with hand tools. The CPSP ranger told us that it was unlikely that the fires would have expanded, because wind conditions at the time were characterized as a "light breeze" and the fuel continuity necessary for the fire to carry was insufficient (patchy).

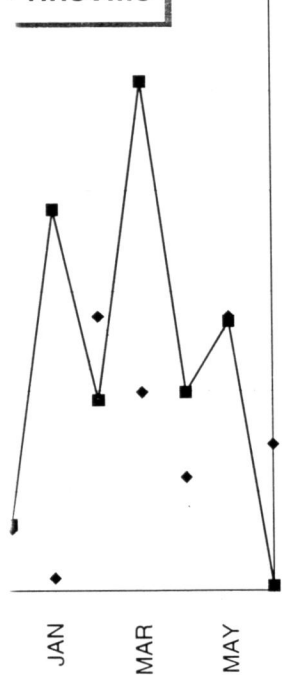
We were also interested in learning how the lack of fire on IRNA was related to vegetation associations in similar areas where fire records have been kept. To acquire this knowledge, we analyzed fire statistics from 1970–1993 for the 42,400-hectare Crooked River National Grassland (CRNG) whose boundaries encompass IRNA. Data for this region afford the best opportunity for comparison since the majority of the CRNG is characterized by topography and vegetation similar to IRNA.

The frequency of lightning-caused fires indicates that fire has not been a major disruptive force on the CRNG during the past quarter-

century. Between 1970 and 1993, 52 lightning-caused fires occurred on the CRNG. The annual number of fires ranged from 0 (seven different years) to 11 (once). Two factors appear to be responsible for the infrequency of fires: 1) a low frequency (between 6–20 days/year) of thunderstorms in central Oregon (Keen 1987); and 2) insufficient fuel continuity to carry the fire (Knapp 1995). Thus, the two fires on the 78 ha IRNA since 1960 are not inconsistent with the low incidence of fire in the larger region.

Wildfires on relict intermountain environments are infrequent. Whisenant (1990) reported that mean fire-return intervals in minimally disturbed sagebrush-steppe communities likely ranged from 60 to 110 years, with the longer intervals of a century assigned to the driest environments with big sagebrush present (Wright and Bailey 1982). Additionally, many researchers (e.g., West 1983; Young et al. 1987; Whisenant 1990) in areas where

Prineville



24-month period prior to the replicate survey

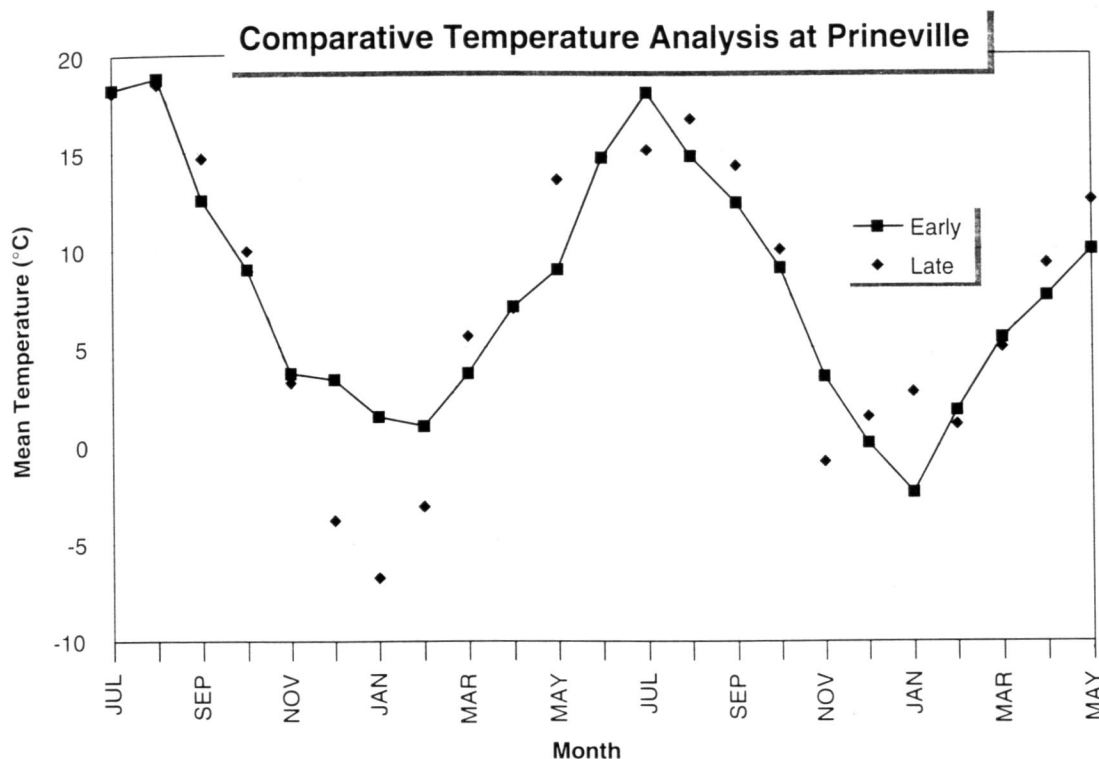


Figure 8. Comparison of mean monthly temperature (°C) at Prineville, Oregon in the 24-month period prior to Driscoll's vegetation survey (July 1958 to June 1960—early) and the 24-month period prior to the replicate survey (July 1992 to June 1994—late). Source: Karl et al. 1990.

0 and 1993, 52 lightning fires on the CRNG. The fires ranged from 0 (seven fires) to 10 (one fire). Two factors appear to be the cause of the infrequency of fires: the low frequency of lightning (between 6–20 days/year) and the low fuel continuity in central Oregon (Keen 1995). Thus, the two fires since 1960 are not inconsequential. The coincidence of fire in the

intermountain environment. Whisenant (1990) reports return intervals in miniature brush-steppe communities 60 to 110 years, with a century assigned to the return interval with big sagebrush (Keen 1982). Additionally, West (1983; Young 1990) in areas where

fires are frequent (< 5 years) have identified a continuous fuelbed of exotic, annual grasses as the primary cause. These grasses likely expanded into sagebrush-steppe environments because of overgrazing, but their maintenance (or expansion) typically is perpetuated by frequent fires that substantially reduce the cover and density of competing shrubs and perennial grasses (West 1983). There is no evidence to suggest that this annual grass/wildfire cycle exists on IRNA, that is, it appears not to be a significant confounding influence.

Biotic Influences

Two biotic influences known to cause shrub die-off in the western states, plant disease and herbivory, are also unlikely to have had significant influences on IRNA vegetation. Plant

disease in western shrubs is thought to be caused by increased precipitation that in turn increases soil salinity and decreases soil oxygen (Weber et al. 1990)—changes that predispose shrubs to attacks by pathogenic root rot organisms. This impact seems to be most evident for species associated with poorly drained soils, but this association is not the case on IRNA. The fractured basaltic origin and upland location of IRNA make for well-drained soils. Indeed as Lunt et al. (1973) have shown, the high soil oxygen requirements of big sagebrush generally excludes it from poorly drained soils.

Herbivory by grazing animals also is unlikely to have affected the results. The grazing pressures of mule deer on IRNA appear to be minimal because of the lack of a water source on the plateau and the distance (horizontal and vertical) separating the plateau from surrounding water sources (Figure 4). Finally, while graz-

ing by small mammals or insects (e.g., grasshoppers) during periodic population fluctuations may cause vegetation change for short (1 to 2 years) periods (Mueggler 1992), these population fluctuations are typically triggered by favorable climatic conditions. And as our climatic analyses show, differences in precipitation or temperature in the two years prior to each study period are not statistically significant. Moreover, BLM records compiled during the last 20 years also report no outbreaks of intense herbivory on IRNA.

Discussion

Johnson et al. (1993) have argued that the relationship between atmospheric carbon dioxide and competition is manifested through differential growth rates of individual species that modify the ability of species to acquire and use other necessary resources. Varying growth rates cause differences in light interception rates that confer a competitive advantage on those species that shade out other species, or that have greater leaf area to absorb more light (Bazzaz and Fajer 1992). The differential effects of increased carbon supply on species also alters competitive interactions through changes in habitat requirements, rates of acquisition of scarce growth resources, rates of growth and phenological development timing, and changes in the required amounts of specific growth resources necessary for ecological success (Johnson et al. 1993).

Woody Species

Our results are in general agreement with proposed CO₂ theories. Cover increased for big sagebrush and western juniper, and slightly decreased for perennial grass cover. In terms of relative cover, most woody species experienced major increases while the dominant herbaceous species experienced reductions.

Big Sagebrush. The largest absolute increase was for big sagebrush, one of the few species native to IRNA that has been examined for response to various atmospheric CO₂ levels. Johnson and Lincoln's (1990) study of big sagebrush recorded growth responses at three levels of atmospheric carbon dioxide—270,

350, and 650 ppm—for plants of three to nine weeks growth. Elevating carbon dioxide from 270 to 350 ppm increased leaf biomass, leaf area, specific leaf weight and plant biomass by 38, 6.5, 35, and 59 percent, respectively. Further increases in carbon dioxide levels from 350 ppm to 650 ppm resulted in additional increases in leaf biomass (46 percent), leaf area (67 percent), and plant biomass (9.6 percent). This evidence suggests a continuing stimulatory effect of atmospheric CO₂ enrichment beyond current CO₂ levels.

At the IRNA site, sagebrush density more than doubled during the last 34 years. These results are in general agreement with other studies that have looked at long-term vegetation changes in arid and semiarid regions under a variety of land-uses. On the sagebrush-steppe of the Upper Snake River Plains of Idaho, for example, sagebrush density increased by 60 percent between 1948 and 1966 (Harniss and Murray 1973). This area had been grazed by sheep each spring and fall, but the authors concluded that "good grazing management [would] not prevent sagebrush reinvansion" (p. 325). Studies in sagebrush-steppe environments in the Great Basin and southwestern Montana also report large increases in sagebrush density over 50-to-100 year intervals (Rogers 1982; Knapp 1991). These changes are attributed to altered fire intervals and changing land-use practices. Similarly, Goldberg and Turner (1986) examined vegetation changes over a 72-year period (1906–1978) on fenced permanent plots in the Sonoran Desert. In a majority of these plots, shrub density consistently increased, which may have been a response to cessation of cattle, sheep, and horse grazing from 1858 to 1906.

Increases in sagebrush cover were also impressive on IRNA between 1960 and 1994. The near doubling in this case is consistent with other long-term studies. For example, Anderson and Holte (1981) found that sagebrush cover increased by 154 percent between 1950 and 1975 on permanent vegetation transects protected from grazing for 25 years in southeastern Idaho.

Similarly, mean sagebrush height at IRNA increased over 30 cm since 1960. Under favorable conditions, big sagebrush can exceed 4.5 meters (Mozingo 1987), so this increase is not surprising given the more favorable conditions (i.e., higher CO₂) during the last 34 years.

Big
virronn
tween
(1989
shoulc
amou
Since
lower
WUE
increa
tionall
to cop
leaves
(Mozi
are of
(1993)
that at
drougl
plants

Wes
perien
during
and lo
cipally
popuk
Carah
sites, i
a min
proxin
Evid
tablich
tograp
nologi
(1969;
sites in
that th
since
establi
fire fre
fire co
tomass
such a
during
(1978)
(1995)
niper
activiti
Orego
causes
sal by
brush,
(1978;
made

or plants of three to nine increasing carbon dioxide from increased leaf biomass, leaf height and plant biomass by 10 percent, respectively. Fertilizer carbon dioxide levels from 1950 to 1994 resulted in additional increases (46 percent), leaf area (19.6 percent) and plant biomass (9.6 percent). This suggests a continuing stimulatory effect of CO₂ enrichment on plants.

Big sagebrush density more than doubled in the last 34 years. These results are in agreement with other studies at long-term vegetation sites in arid and semiarid regions under various land-uses. On the sagebrush-steppe of the Snake River Plains of Idaho, big sagebrush density increased 100 percent between 1948 and 1966 (Mozingo 1973). This area had been grazed in spring and fall, but the absence of "good grazing management" prevented sagebrush reinvasion in sagebrush-steppe environments in the Great Basin and southwest. Other studies report large increases in sagebrush cover over 50-to-100 year intervals (Knapp 1991). These increases are attributed to altered fire intervals and land-use practices. Similarly, Miller (1986) examined vegetation over a 72-year period (1906–1978) on permanent plots in the Sonoran Desert. The majority of these plots, shrub cover increased, which may be attributed to cessation of cattle grazing from 1858 to 1906. Sagebrush cover was also increased between 1960 and 1994. This increase is consistent with other studies. For example, Anderson (1981) found that sagebrush cover increased 154 percent between 1950 and 1978 on permanent vegetation transects in southern Idaho for 25 years in south-

western Idaho. Sagebrush height at IRNA increased since 1960. Under favorable conditions, sagebrush can exceed 4.5 m (Mozingo 1987), so this increase is not surprising under more favorable conditions during the last 34 years.

Big sagebrush typically grows in steppe environments with annual precipitation totals between 18 to 40 cm (Mozingo 1987). Idso (1989) has argued that increases in WUE should result in proportional decreases in the amount of precipitation required for survival. Since precipitation totals for IRNA are near the lower range for big sagebrush, increases in WUE would seem to provide the impetus for increases in density, cover, and height. Additionally, big sagebrush has evolved the ability to cope with drought by dropping some of its leaves and by concentrating salts in the cell sap (Mozingo 1987). These adaptations to drought are of particular importance, since Rozema (1993) and Idso and Idso (1994) have reported that atmospheric CO₂ partially alleviates the drought's deleterious effects for a variety of plants grown under drought stress.

Western Juniper. Western juniper also experienced large increases in density and cover during the past 34 years. This slow-growing and long-lived tree (800–1000+ years) is principally found in central Oregon with disjunct populations in bordering states (Preston 1968; Caraher 1978). It does well on exposed, rocky sites, is windfirm (Preston 1967), and requires a minimal precipitation of 25 cm/year—approximately the annual total on IRNA.

Evidence of widespread western juniper establishment is supported by written and photographic records as well as dendrochronological analyses. Burkhardt and Tisdale (1969; 1976) examined four western juniper sites in southwestern Idaho and determined that the cessation of natural fires, particularly since 1910, was the principal cause of juniper establishment. Additionally, they believed that fire frequencies decreased because of active fire control and prevention, reduction of phytomass by grazing, construction of fire breaks such as roads, and a warmer and drier climate during the past century. Similarly, Caraher (1978), Eddleman (1987), and Miller and Rose (1995) reported large increases of western juniper (on sites exposed to a variety of land-use activities) into big sagebrush communities in Oregon during the last 100 years. Possible causes for the establishment were seed dispersal by birds, fire cessation, increases in sagebrush, and the influences of grazing (Caraher 1978; Eddleman 1987; Miller and Rose 1995). In addition, Miller and Wigand (1994) have

suggested that increasing atmospheric CO₂ conditions may also play a role.

Our results on western juniper, like those presented by Eddleman (1987) and Miller and Rose (1995), suggest that establishment is occurring across a variety of land-uses. Eddleman (1987) found that the oldest trees on his study site were established in 1880 and that juniper density continually increased through the end of his study period in 1980. Eddleman's results are in agreement with those of Miller and Rose (1995). They cored 1200 western juniper on Steens Mountain in southeastern Oregon to determine establishment dates and found substantial juniper expansion began in the 1880s, and continued through the 1950s. From the 1960s onward, however, juniper establishment "then began to progress at a geometric rate" (Miller and Rose 1995:37), and occurred in the absence of favorable climatic conditions. Similarly, we found that juniper density and cover increased at each interval measured between 1961 and 1994.

Western juniper establishment on IRNA seems to have occurred without the operation of the traditional mechanisms used to explain the increases elsewhere. If western juniper cover and density have increased because of decreased fire-return intervals, then these are naturally occurring phenomena and are not promoted by changing land-use activities. Domestic grazing, viewed as an indirect catalyst because it decreases the amount of fine fuel necessary to carry a fire, has been absent (and likely never was a factor) on IRNA for approximately 70 years. Climatic variability has been statistically insignificant since 1960 with the exception of a slight increase in temperature. Miller and Wigand (1994:446) have shown that previous episodes of western juniper expansion during the Holocene (beginning "between 4000 and 7000 years ago") in eastern Oregon occurred under wetter conditions. Conversely, the most recent (post-1880s) episode of juniper expansion has occurred under more arid conditions that are considered to be unfavorable for juniper establishment (Miller and Wigand 1994).

What, then, has caused the increase in juniper density and cover? We believe at least two causes are responsible for the IRNA increase. First, elevated CO₂ during the past 34 years likely has increased WUE for the western juniper, thereby making a climatically marginal ju-

niper site (lower end of precipitation requirements) more favorable. Although we lack studies relating western juniper expansion to elevated atmospheric CO₂ and associated increases in WUE, Hollinger (1987) has shown that Douglas fir (*Pseudotsuga menziesii*) and Monterey pine (*Pinus radiata*), both western conifers, increased the levels of WUE at CO₂ concentrations of 640 ppm. Additionally, La Marche et al. (1984), Graybill (1987), and Graybill and Idso (1993) have reported probable and substantial CO₂ growth-enhancement beginning in the latter half of the nineteenth century for subalpine conifers (particularly the "strip-bark" tree form) growing under natural conditions on semiarid sites in the Sierra Nevada, Southern Rockies, and Great Basin. Graybill (1987) and Graybill and Idso (1993) have noted that growth enhancement may have been a function of increased WUE.

A second cause of juniper establishment may be related to the increase in big sagebrush cover and density. Increases in the latter have created more favorable sites for juniper germination and establishment. Burkhardt and Tisdale (1976) and Eddleman (1987) have suggested that western juniper establishment typically begins beneath the canopy of big sagebrush plants, probably because these locations are preferred nesting sites for local bird species that use juniper berries as a food source. It has been further suggested that big sagebrush acts as a nurse plant for juniper seedlings where the seedlings benefit from the microclimatic conditions (reduced temperature variability, reduced transpiration rates) and elevated nutrient status near the shrub base. We noted many western juniper saplings growing within the canopy of big sagebrush.

Herbaceous Species

Our vegetation survey reported little change in total perennial herbaceous cover and a decrease in annual cover during the past 34 years. The dominance of perennial herbaceous species, however, decreased from 50 percent of the relative cover to 35.5 percent. Studies that have monitored long-term change on sagebrush-steppe grasslands have reported a variety of results. Anderson and Holte (1981) found that in a southeastern Idaho enclosure, perennial grass cover increased from 0.3 per-

cent to 5.8 percent after 25 years without grazing. In another study in southeastern Idaho, Harniss and Murray (1973) found that herbaceous species yield (including bluebunch wheatgrass) decreased between the years 1936–1966 and was likely a function of vigorous sagebrush establishment following a burn.

Our results, similar to Harniss and Murray (1973), indicate a decrease in perennial herbaceous cover. It appears that grass cover has been able to coexist with woody species with only a slight decrease in absolute cover. This may be because of various responses of individual species to elevated CO₂, competition dynamics for light and nutrients, and/or the fact that the herbaceous vegetation cover is susceptible to yearly variations in herbivory and precipitation (Mueggler 1992).

Few laboratory studies have examined the effects of CO₂ enrichment on herbaceous species common to central Oregon. Smith et al. (1987) have done so, however, for four Great Basin grasses including cheatgrass and western wheatgrass (*Agropyron smithii* Rydb.). When these grasses were grown in atmospheric CO₂ concentrations of approximately the ambient atmosphere (340 µl l⁻¹) and double the ambient atmosphere (680 µl l⁻¹), cheatgrass had the most consistent response. CO₂ enrichment significantly increased above-ground dry weight, the number of basal stems, and the leaf area of cheatgrass 120 days after seedling emergence relative to ambient conditions. For western wheatgrass, significant increases were reported for the number of basal stems, above ground dry weight, and specific leaf weight, but not leaf area.

The decrease in IRNA's cheatgrass cover was the only measurement that we felt was inconsistent with the theory of atmospheric CO₂ enrichment. Based on laboratory results and the widespread distribution of cheatgrass (Mack 1981; Young et al. 1987), we anticipated greater cover at IRNA. This inconsistency may be because annuals such as cheatgrass are opportunists that take advantage of favorable events as they occur; hence, cover variability would be linked principally to favorable climatic conditions. Cheatgrass germinates in the fall after the first rain, its roots grow throughout most of the winter (temperatures must be above 0°C), and above-ground biomass is dependent on spring soil moisture (Harris 1967; West 1983). While precipitation totals were

similar in the two years preceding the 1960 and 1994 studies, a closer look reveals that March precipitation in 1960 was above normal, that is, sufficient to encourage abundant cheatgrass growth in the spring of 1960.

Conclusions

We realize that the cause of vegetation change in any plant community is often a function of numerous factors either working individually or in concert, and that it is difficult to separate these mechanisms. We also realize that plant communities change continuously. Our purpose, however, is to determine if the increases in woody species cover and density are explicable by traditional mechanisms; or, if not, are these increases consistent with what has been predicted to occur as a result of atmospheric CO₂ enrichment? For vegetation change on IRNA, we believe that the latter phenomenon has been operative. We found no statistically significant different periods of precipitation for the 2-, 10-, and 34-year periods before each study date. Nor did fire appear to be a significant component of vegetation dynamics on IRNA. IRNA's fire history is meager (only one incident between 1960 and 1994), and the two fires that did occur did not affect our study area (macroplots). Furthermore, grazing has not occurred for approximately 70 years, insect or disease impacts were not found, and human activity on IRNA was minimal. In sum, neither Driscoll's survey nor ours was subject to unusual perturbations that would have affected our comparison of vegetation change.

IRNA's vegetation changes are generally consistent with outcomes predicted by both laboratory and controlled field experiments employing elevated levels of atmospheric CO₂; and they are similar to much of what has been reported in other long-term studies in natural sites exposed to a variety of land-use practices (i.e., fire, grazing) in sagebrush-steppe environments. Our results suggest that atmospheric CO₂ enrichment is a likely contributory cause of vegetation change on IRNA, and more specifically, to increases in woody species that now represent nearly two-thirds of the total vegetation cover. As IRNA's western juniper and big sagebrush density increased (by 41 percent and 115 percent, respectively), its per-

ennial herbaceous cover was nearly unchanged and annual grass cover decreased.

IRNA's protected status and the permanency of the plots invite further studies of the effects of CO₂ enrichment on vegetation. First, controlled laboratory experiments that expose the native dominants to elevated CO₂ levels would provide insight into the relative responses of the species. Second, replicate quinquennial surveys would eliminate the caveats associated with the two "snapshot" samples used here. Third, comparative studies could provide benchmarks for similar repeat surveys in other protected sagebrush-steppe areas. Fourth, dendrochronological analyses of IRNA's western juniper would determine establishment dates, and would help elucidate the rate of juniper expansion following the industrial revolution. Finally, as Neilson (1993) has argued, ecotones may be particularly good sites to observe vegetation changes in response to atmospheric changes. Monitoring of ecotones (e.g. sagebrush-steppe/ponderosa pine) common to central Oregon would also provide insight.

This study seeks to understand long-term vegetation change when familiar explanations fail. While the relationship between rising atmospheric CO₂ concentrations and increases in woody species may seem fortuitous, we believe that this relationship is more than coincidental. The implications of these results for natural ecosystems are broad. Regionally, continual shifts toward increased woody-species cover and density in sagebrush-steppe and juniper woodlands of the American West would alter fire regimes, range productivity, and watershed dynamics. Globally, Idso and Kimball (1993) have argued that enhanced tree (woody) growth increases forest biomass, thus resulting in more niche availability that favors higher biodiversity. Further, they state (p. 551) that "enhanced tree growth would greatly augment the biospheric removal of carbon dioxide from the atmosphere," thus altering the rate of increases in CO₂ and complicating the associated consequences of these increases (e.g., possible global warming). Clearly, given the ubiquitous nature of atmospheric CO₂ enrichment and the probable effects to vegetation, additional studies from other relict sites are necessary to lend credence to the global-scale dynamics of CO₂-enhanced vegetation change suggested herein.

Acknowledgments

We thank Dick Driscoll and Ron Halvorson for their valuable insights on the collection of field data and helpful reviews on the initial draft of this manuscript. Additionally, we thank Jeffery McMichael for cartographic assistance, Paul Patton for information about IRNA, and four anonymous reviewers for their constructively critical comments on this article.

References

- Anderson, J. E., and Holte, K. E. 1981. Vegetation Development over 25 Years without Grazing on Sagebrush-Dominated Rangeland in Southeastern Idaho. *Journal of Range Management* 34:25-29.
- Bahre, C. J. 1991. *A Legacy of Change*. Tucson: University of Arizona Press.
- Bazzaz, F. A., and Fajer, E. D. 1992. Plant Life in a CO₂-Rich World. *Scientific American* 266:68-74.
- Bazzaz, F. A., Miao, S. L., and Wayne, P. M. 1993. CO₂-Induced Growth Enhancements of Co-occurring Tree Species Decline at Different Rates. *Oecologia* 96:478-482.
- Blackman, V. H. 1919. The Compound Interest Law of Plant Growth. *Annals of Botany* 33:353-360.
- Burkhardt, J. W., and Tisdale, E. W. 1969. Nature and Successional Status of Western Juniper Invasion in Idaho. *Journal of Range Management* 22:264-270.
- , and ———. 1976. Causes of Juniper Invasion in Southwestern Idaho. *Ecology* 57:472-484.
- Caraher, D. L. 1978. The Spread of Western Juniper in Central Oregon. In *Proceedings of the Western Juniper Ecology and Management Workshop*, ed. R. E. Martin, J. E. Dealy, and D. L. Caraher, pp. 1-7. General Technical Report PNW-74. Portland: United States Department of Agriculture, Forest Service.
- Curtis, P. S., Drake, B. G., Leadley, P. W., Arp, W. J., and Whigham, D. F. 1989a. Growth and Senescence in Plant Communities Exposed to Elevated CO₂ Concentrations on an Estuarine Marsh. *Oecologia* 78:20-26.
- Curtis, P. S., Drake, B. G., and Whigham, D. F. 1989b. Nitrogen and Carbon Dynamics in C₃ and C₄ Estuarine Marsh Plants under Elevated CO₂ *in situ*. *Oecologia* 78:297-301.
- , ———, and ———. 1990. Elevated Atmospheric CO₂ Effects on Belowground Processes in C₃ and C₄ Estuarine Marsh Communities. *Ecology* 71:2001-2006.
- Diaz, H. F. 1983. Some Aspects of Major Dry and Wet Periods in the Contiguous United States, 1895-1981. *Journal of Climatology and Applied Meteorology* 22:3-16.
- Drake, B. G., and Leadley, P. W. 1991. Canopy Photosynthesis of Crops and Native Plant Communities Exposed to Long-Term Elevated CO₂. *Plant, Cell and Environment* 14:853-860.
- Driscoll, R. S. 1962. Characteristics of Some Vegetation-Soil Units in the Juniper Zone in Central Oregon. Ph.D. Dissertation, Department of Range Management, Oregon State University.
- . 1964. A Relict Area in the Central Oregon Juniper Zone. *Ecology* 45:345-353.
- . 1994. Range Conservationist Emeritus, personal communication, June 22.
- . 1995. Range Conservationist Emeritus, personal communication, January 10.
- Eamus, D. 1991. The Interaction of Rising CO₂ and Temperatures with Water Use Efficiency. *Plant, Cell and Environment* 14:843-852.
- Eddleman, L. E. 1987. Establishment and Stand Development of Western Juniper in Central Oregon. In *Proceedings—Pinyon-Juniper Conference*, ed. R. L. Everett, pp. 255-259. General Technical Report INT-215. Ogden, Utah: United States Department of Agriculture.
- Fritschen, L. J., and Nixon, P. R. 1967. Microclimate before and after Irrigation. In *Ground Level Climatology*, ed. R. H. Shaw, pp. 351-366. Washington, D. C.: American Association for the Advancement of Science.
- Garcia, R. L., Idso, S. B., Wall, G. W., and Kimball, B. A. 1994. Changes in Net Photosynthesis and Growth of *Pinus elliottii* Seedlings in Response to Atmospheric CO₂ Enrichment. *Plant, Cell and Environment* 17:971-978.
- Goldberg, D. E., and Turner, R. M. 1986. Vegetation Change and Plant Demography in Permanent Plots in the Sonoran Desert. *Ecology* 67:695-712.
- Graybill, D. A. 1987. A Network of High Elevation Conifers in the Western United States for Detection of Tree-Ring Growth Response to Increasing Atmospheric Carbon Dioxide. In *Proceedings the International Symposium on Ecological Aspects of Tree-Ring Analysis*, ed. G. C. Jacoby and J. W. Hornbeck, pp. 463-474. Report DOE/CONF-8608144. Washington, D.C.: United States Department of Energy.
- Graybill, D. A., and Idso, S. B. 1993. Detecting the Aerial Fertilization Effect of Atmospheric CO₂ Enrichment in Tree-Ring Chronologies. *Global Biogeochemical Cycles* 7:81-95.
- Halvorson, R. 1991. The Island ACEC Preserves Native Grasslands. *BLM News* April:2.
- Harniss, R. O., and Murray, R. B. 1973. 30 Years of Vegetal Change Following Burning of Sagebrush-Grass Range. *Journal of Range Management* 26:322-325.
- Harris, G. A. 1967. Some Competitive Relations between *Agropyron spicatum* and *Bromus tectorum*. *Ecological Monographs* 37:89-111.
- Hastings, J. R., and Turner, R. M. 1965. *The Changing Mile*. Tucson: University of Arizona Press.

- and Native Plant Community Long-Term Elevated CO₂ Experiment 14:853–860.
- Characteristics of Some Vegetation in the Juniper Zone in Central Oregon, Department of Botany, Oregon State University.
- Vegetation in the Central Oregon Juniper Zone, *Journal of Range Management* 45:345–353.
- Observationist Emeritus, personal communication, June 22.
- Observationist Emeritus, personal communication, January 10.
- Effect of Rising CO₂ and Water Use Efficiency. *Plant, Cell and Environment* 14:843–852.
- Establishment and Stand Development of Juniper in Central Oregon—Pinyon-Juniper Conference, pp. 255–259. General Technical Report GTR-215. Ogden, Utah: United States Department of Agriculture.
- Idso, S. B. 1967. Microclimate Change. In *Ground Level Climate Change*, pp. 351–366. Washington: American Association for the Advancement of Science.
- Idso, S. B., Wall, G. W., and Kimball, B. A. 1983. Net Photosynthesis and Growth of Pinyon-Juniper Seedlings in Response to CO₂ Enrichment. *Plant, Cell and Environment* 6:978.
- Idso, S. B. 1986. Vegetation Demography in Permanent Desert. *Ecology* 67:695–712.
- Idso, S. B. 1991. A Network of High Elevation Sites in the United States for Detecting Response to Increasing Atmospheric CO₂. In *Proceedings of the Symposium on Ecological Analysis*, ed. G. C. Jacoby, pp. 463–474. Report DOE/ER-0133. Washington, D.C.: United States Department of Energy.
- Idso, S. B. 1993. Detecting the Effects of Atmospheric CO₂ Enrichment. *Global Biochemistry* 14:81–95.
- Idso, S. B. 1994. Granddune ACEC Preserves Natural Vegetation. *News* April:2.
- Idso, S. B., and Kimball, B. A. 1973. 30 Years of Observations on Burning of Sagebrush. *Journal of Range Management* 26:107–111.
- Idso, S. B. 1965. *The Changing Climate of Arizona*. University of Arizona Press.
- Hays, S. M. 1991. Modern Air May Favor Rangeland Brush. *Agricultural Research* 38:14–17.
- Hollinger, D. Y. 1987. Gas Exchange and Dry Matter Allocation Responses to Elevation of Atmospheric CO₂ Concentration in Seedlings of Three Tree Species. *Tree Physiology* 3:193–202.
- Hunter, R. 1991. *Bromus* Invasions on the Nevada Test Site: Present Status of *B. rubens* and *B. tectorum* with Notes on their Relationship to Disturbance and Altitude. *Great Basin Naturalist* 51:176–182.
- Idso, K. E., and Idso, S. B. 1994. Plant Responses to Atmospheric CO₂ Enrichment in the Face of Environmental Constraints: A Review of the Past 10 Years' Research. *Agricultural and Forest Meteorology* 69:153–203.
- Idso, S. B. 1989. *Carbon Dioxide and Global Change: Earth in Transition*. Tempe, Arizona: IBR Press.
- Idso, S. B. 1992. Shrubland Expansion in the American Southwest. *Climatic Change* 22:85–86.
- Idso, S. B., and Balling, R. C., Jr. 1992. United States Drought Trends of the Past Century. *Agricultural and Forest Meteorology* 60:279–284.
- Idso, S. B., and Kimball, B. A. 1993. Tree Growth in Carbon Dioxide Enriched Air and Its Implications for Global Cycling and Maximum Levels of Atmospheric CO₂. *Global Biogeochemical Cycles* 7:537–555.
- Johnson, R. H., and Lincoln, D. E. 1990. Sagebrush and Grasshopper Responses to Atmospheric Carbon Dioxide Concentration. *Oecologia* 84:103–110.
- Johnson, H. B., and Mayeux, H. S. 1992. Viewpoint: A View on Species Additions and Deletions and the Balance of Nature. *Journal of Range Management* 45:322–333.
- Johnson, H. B., Polley, H. W., and Mayeux, H. S. 1993. Increasing CO₂ and Plant-Plant Interactions: Effects on Natural Vegetation. *Vegetatio* 104/105:157–170.
- Karl, T. R., and Heim, R. R., Jr. 1990. Are Droughts Becoming More Frequent or Severe in the United States? *Geophysical Research Letters* 17:1921–1924.
- Karl, T. R., and Koscielny, A. J. 1982. Drought in the United States: 1895–1981. *Journal of Climatology* 2:313–329.
- Karl, T. R., Kukla, G., and Gavin, J. 1986. Relationship between Decreased Temperature Range and Precipitation Trends in the United States and Canada, 1941–1980. *Journal of Climate and Applied Meteorology* 25:1878–1886.
- Karl, T. R., Williams, C. N., Jr., Quinlan, F. T., and Boden, T. A. 1990. *United States Historical Climatology Network (HCN) Serial Temperature and Precipitation Data*. Oak Ridge, Tennessee: Carbon Dioxide Information Analysis Center.
- Keeling, C. D., and Whorf, T. P. 1994. Atmospheric Records from Sites in the SIO Air Sampling Network. In *Trends '93: A Compendium of Data on Global Change*, ed. T. A. Boden, D. P. Kaiser, R. J. Sepanski, and F. W. Stoss, pp. 16–26. Oak Ridge, Tennessee: Carbon Dioxide Information Analysis Center, Oak Ridge National Laboratory.
- Keen, R. A. 1987. *Skywatch: The Western Weather Guide*. Golden, Colorado: Fulcrum.
- Kimball, B. A. 1983. Carbon Dioxide and Agricultural Yield: An Assemblage and Analysis of 430 Prior Observations. *Agronomy Journal* 75:779–788.
- Kimball, B. A., and Idso, S. B. 1983. Increasing Atmospheric CO₂: Effects on Crop Yield, Water Use and Climate. *Agricultural Water Management* 7:55–72.
- Knapp, P. A. 1991. The Response of Semiarid Vegetation Assemblages Following the Abandonment of Mining Towns in South-Western Montana. *Journal of Arid Environments* 20:205–222.
- Knapp, P. A. 1992. Secondary Plant Succession and Vegetation Recovery in Two Western Great Basin Ghost Towns. *Biological Conservation* 60:81–89.
- Knapp, P. A. 1995. Intermountain West Lightning-Caused Fires: Climatic Predictors of Area Burned. *Journal of Range Management* 48:85–91.
- LaMarche, V. C., Graybill, D. A., Fritts, H. C., and Rose, M. R. 1984. Increasing Atmospheric Carbon Dioxide: Tree-Ring Evidence for Growth Enhancement in Natural Vegetation. *Science* 225:1019–1021.
- Lillesand, T. M., and Kiefer, R. W. 1994. *Remote Sensing and Image Interpretation*. New York: John Wiley and Sons.
- Lunt, O. R., Letey, J., and Clark, S. B. 1973. Oxygen Requirements for Root Growth in Three Species of Desert Shrubs. *Ecology* 54:1356–1362.
- Mack, R. N. 1981. Invasion of *Bromus tectorum* L. into Western North America: An Ecological Chronicle. *Agroecosystems* 7:145–165.
- Mayeux, H. S., Johnson, H. B., and Polley, H. W. 1991. Global Change and Vegetation Dynamics. In *Noxious Range Weeds*, ed. L. F. James, J. O. Evans, M. H. Ralphs, and R. D. Child, pp. 62–74. Boulder, Colorado: Westview Press.
- Mayeux, H. S., Johnson, H. B., Polley, H. W., Dumesnil, J. J., and Spanel, G. A. 1994. Potential Interactions between Global Change and Intermountain Annual Grasslands. In *Proceedings—Symposium: Ecology, Management and Restoration of Intermountain Annual Rangelands*, ed. S. B. Monsen and S. G. Kitchen, pp. 95–100. General Technical Report INT-GTR 313. Ogden, Utah: United States Department of Agriculture, Forest Service.
- Mayeux, H. S., Johnson, H. B., Polley, H. W., Dumesnil, J. J., and Spanel, G. A. 1993. A Controlled Environment for Growing Plants across a Subambient CO₂ Gradient. *Functional Ecology* 7:125–133.
- Miller, R. F., and Rose, J. A. 1995. Historic Expansion of *Juniperus occidentalis* (Western Juniper) in

- Southeastern Oregon. *Great Basin Naturalist* 55:37-45.
- Miller, R. F., and Wigand, P. E. 1994. Holocene Changes in Semiarid Pinyon-Juniper Woodlands. *BioScience* 44:465-474.
- Mooney, H. A., Drake, B. G., Luxmoore, R. J., Oechel, W. C., and Pitelka, L. F. 1991. Predicting Ecosystem Responses to Elevated CO₂ Concentrations. *BioScience* 42(2):96-104.
- Mozingo, H. N. 1987. *Shrubs of the Great Basin*. Reno: University of Nevada Press.
- Mueggler, W. F. 1992. *Cliff Lake Bench Research Natural Area: Problems Encountered in Monitoring Vegetation Change on Mountain Grasslands*. Research Paper INT-454. Ogden, Utah: United States Department of Agriculture, Forest Service.
- National Climatic Data Center. 1989. Time Bias Corrected Divisional Temp-Precip-Drought Index: TD9640 Tape Documentation. Asheville, North Carolina: National Climatic Data Center.
- Neftel, A., Friedli, H., Moor, E., Lotscher, H., Oeschger, H., Siegenthaler, U., and Stauffer, B. 1994. Historical CO₂ Record from the Siple Station Ice Core. In *Trends '93: A Compendium of Data on Global Change*, ed. T. A. Boden, D. P. Kaiser, R. J. Sepanski, and F. W. Stoss, pp. 11-14. ORNL/CDIAC-65. Oak Ridge, Tennessee: Carbon Dioxide Information Analysis Center, Oak Ridge National Laboratory.
- Neilson, R. P. 1993. Transient Ecotone Response to Climatic Change: Some Conceptual and Modeling Approaches. *Ecological Applications* 3:385-395.
- Oechel, W. C., and Riechers, G. H. 1986. Impacts of Increasing CO₂ on Natural Vegetation, Particularly the Tundra. In *Proceedings of Climate-Vegetation Workshop*, pp. 36-42. Greenbelt, Maryland: NASA/GSFC.
- Oke, T. R. 1987. *Boundary Layer Climates*. New York: Methuen.
- Panofsky, H. A., and Brier, G. W. 1968. *Some Applications of Statistics to Meteorology*. University Park: Pennsylvania State University Press.
- Plantico, M. S., Karl, T. R., Kukla, G., and Gavin, J. 1990. Is Recent Climate Change across the United States Related to Rising Levels of Anthropogenic Greenhouse Gases? *Journal of Geophysical Research* 95:16,617-16,637.
- Polley, H. W., Johnson, H. B., Marino, B. D., and Mayeux, H. S. 1993. Increase in C₃ Plant Water-Use Efficiency and Biomass over Glacial to Present CO₂ Concentrations. *Nature* 361:61-64.
- Preston Jr., R. J. 1968. *Rocky Mountain Trees*. New York: Dover Publications.
- Rogers, G. F. 1982. *Then and Now*. Salt Lake City: University of Utah Press.
- Rozema, J. 1993. Plant Responses to Atmospheric Carbon Dioxide Enrichment: Interactions with Some Soil and Atmospheric Conditions. *Vegetatio* 104/105:173-190.
- Sage, R. F., Sharkey, T. D., and Seeman, J. R. 1989. Acclimation of Photosynthesis to Elevated CO₂ in Five C₃ Species. *Plant Physiology* 89:590-596.
- Sionit, N., and Patterson, D. T. 1984. Responses of C₄ Grasses to Atmospheric CO₂ Enrichment. *Oecologia* 65:30-34.
- Smith, C. 1994. Oregon State Parks Ranger, personal communication, September 9.
- Smith, S. D., Strain, B. R., and Sharkey, D. 1987. Effects of CO₂ Enrichment on Four Great Basin Grasses. *Functional Ecology* 1:139-143.
- Sneva, F. A. 1982. Relationship of Precipitation and Temperature with Yield of Herbaceous Plants in Eastern Oregon. *International Journal of Biometeorology* 26:263-276.
- Soulé, P. T. 1992. Spatial Patterns of Drought Frequency and Duration in the Contiguous USA Based on Multiple Drought Event Definitions. *International Journal of Climatology* 12:11-24.
- Surano, K. A., Daley, P. F., Houppis, J. L. J., Shinn, J. H., Helms, J. A., Palasson, R. J., and Costella, M. P. 1986. Growth and Physiological Responses of *Pinus ponderosa* to Long-Term Elevated CO₂ Concentrations. *Tree Physiology* 2:243-259.
- Taylor, G. 1994. State Climatologist, Oregon. Personal communication, November 3.
- Tissue, D. L., and Oechel, W. C. 1987. Physiological Response of *Eriophorum vaginatum* to Field Elevated CO₂ and Temperature in the Alaskan Tussock Tundra. *Ecology* 68:401-410.
- United States Geological Survey. 1993. *Round Butte Dam, Oregon*. 7.5 Minute Topographic Map.
- Veblen, T. T., and Lorenz, D. C. 1991. *The Colorado Front Range*. Salt Lake City: University of Utah Press.
- Webb, R. H., Steiger, J. W., and Turner, R. M. 1987. Dynamics of Desert Shrub Assemblages in the Panamint Mountains, California. *Ecology* 68:478-490.
- Weber, D. J., Nelson, D. L., Hess, W. M., and Bhat, R. B. 1990. Salinity and Moisture Stress in Relation to Dieoff of Wildland Shrubs. In *Proceedings—Symposium on Cheatgrass Invasion, Shrub Die-Off, and Other Aspects of Shrub Biology and Management*, ed. E. D. McArthur, E. M. Romney, S. D. Smith, and P. T. Tueller, pp. 91-114. General Technical Report INT-276. Ogden, Utah: United States Department of Agriculture.
- West, N. E. 1983. Western Intermountain Sagebrush Steppe. In *Temperate Deserts and Semideserts*, ed. N. E. West, pp. 375-397. Amsterdam: Elsevier Scientific.
- Whisenant, S. G. 1990. Changing Fire Frequencies on Idaho's Snake River Plains: Ecological Management Implications. In *Proceedings—Symposium*

- ospheric Conditions. *Vegeta-*
0.
- D., and Seeman, J. R. 1989. Photosynthesis to Elevated CO₂. *Plant Physiology* 89:590–596.
- n, D. T. 1984. Responses of Atmospheric CO₂ Enrichment. 4.
- on State Parks Ranger, person, September 9.
- ., and Sharkey, D. 1987. Enrichment on Four Great Basin. *Ecology* 1:139–143.
- Relationship of Precipitation and Field of Herbaceous Plants in. *International Journal of Biome-*
76.
- cial Patterns of Drought Fre-
ion in the Contiguous USA
Drought Event Definitions. *In-*
of Climatology 12:11–24.
- ., Houppis, J. L. J., Shinn, J. H.,
isson, R. J., and Costella,
th and Physiological Re-
nderosa to Long-Term Ele-
ntrations. *Tree Physiology*
- Climatologist, Oregon. Per-
n, November 3.
- l, W. C. 1987. Physiological
rum vaginatum to Field Ele-
perature in the Alaskan Tus-
y 68:401–410.
- Survey. 1993. *Round Butte*
Minute Topographic Map.
- , D. C. 1991. *The Colorado*
ike City: University of Utah
- V., and Turner, R. M. 1987.
Shrub Assemblages in the
California. *Ecology* 68:478–
- L., Hess, W. M., and Bhat,
and Moisture Stress in Rela-
ldland Shrubs. In *Proceed-*
Cheatgrass Invasion, Shrub
Aspects of Shrub Biology and
D. McArthur, E. M. Rom-
d P. T. Tueller, pp. 91–114.
port INT-276. Ogden, Utah:
ment of Agriculture.
- n Intermountain Sagebrush
Deserts and Semideserts,
375–397. Amsterdam: El-
- Changing Fire Frequencies
er Plains: Ecological Man-
. In *Proceedings—Sympo-*
- sium on Cheatgrass Invasion, Shrub Die-Off and*
Other Aspects of Shrub Biology and Manage-
ment, ed. E. D. McArthur, E. M. Romney, S. D.
Smith, and P. T. Tueller, pp. 4–10. General Tech-
nical Report INT-276. Ogden, Utah: United States
Department of Agriculture.
- Wright, H. A., and Bailey, A. W. 1982. *Fire Ecology*.
New York: John Wiley and Sons.
- Yin, Z.-Y. 1993. Spatial Pattern of Temporal Trends
in Moisture Conditions in the Southeastern
United States. *Geografiska Annaler, Series A*
75:1–11.
- Young, J. A., and Evans, R. A. 1981. Demography
and Fire History of a Western Juniper Stand. *Jour-*
nal of Range Management 34(6):501–506.
- Young, J. A., Evans, R. A., Eckert, R. E., Jr., and Kay,
B. L. 1987. Cheatgrass. *Rangelands* 9:266–270.

Submitted 2/95; Revised 8/95; Accepted 11/95.

Knapp, Paul A., and Soulé, Peter T. 1996. Vegetation Change and the Role of Atmospheric CO₂ Enrichment on a Relict Site in Central Oregon: 1960–1994. *Annals of the Association of American Geographers* 86(3):387–411. *Abstract*.

Atmospheric CO₂ enrichment is increasingly implicated as a contributory cause of vegetation change on North American rangelands. To explore the role of the rising CO₂ content of the earth's atmosphere as an agent of vegetation change, we revisited (June 1994) the Island Research Natural Area (IRNA), a relict site of semiarid vegetation in central Oregon, to conduct a replicate survey of Driscoll's (1962) 1960 work. IRNA is one of the best non-laboratory settings to examine CO₂-induced vegetation change because human activities have been limited there. The physiological effects of increased levels of atmospheric CO₂ include increased photosynthetic rates, reduced transpiration rates, and increased water-use efficiency. While all species benefit from atmospheric CO₂ enrichment, the increase in CO₂ alters competitive interactions, typically favoring those species that outcompete others for light, nutrients, habitat, and other resources necessary for reproductive success.

Our results show that between 1960 and 1994 IRNA experienced large increases in woody-species cover and density, no change in perennial herbaceous cover, and decreases in annual cover. Western juniper density and cover increased by 41 percent and 113 percent, respectively. Similarly, big sagebrush density and cover approximately doubled. These findings are similar to findings reported in other long-term studies conducted at sites with a variety of land-use activities. We found, however, that none of the traditional mechanisms typically invoked to explain these changes were compatible with the biotic changes that we observed. On the IRNA site, no organized fire suppression had occurred, grazing had been absent since the 1920s, logging was non-existent, variabilities in seasonal water-year precipitation totals were not statistically significant between the 2-, 10-, and 34-year periods prior to each vegetation survey, and disease or pest infestation was not evident. We conclude that the vegetation changes observed are consistent with laboratory and controlled field experiments that enrich the air with CO₂. **Key Words:** CO₂ enrichment, central Oregon, sagebrush-steppe, vegetation change.

Correspondence: Department of Geography, Georgia State University, Atlanta, Georgia, 30303-3083 (Knapp); Department of Geography and Planning, Appalachian State University, Boone, North Carolina, 28608 (Soulé).